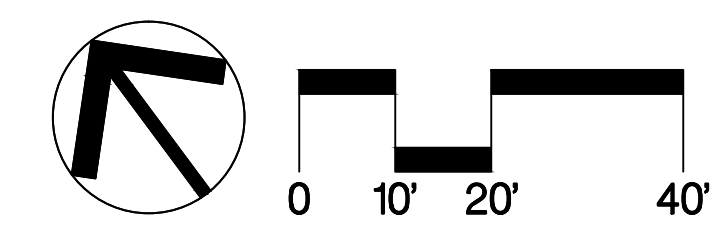
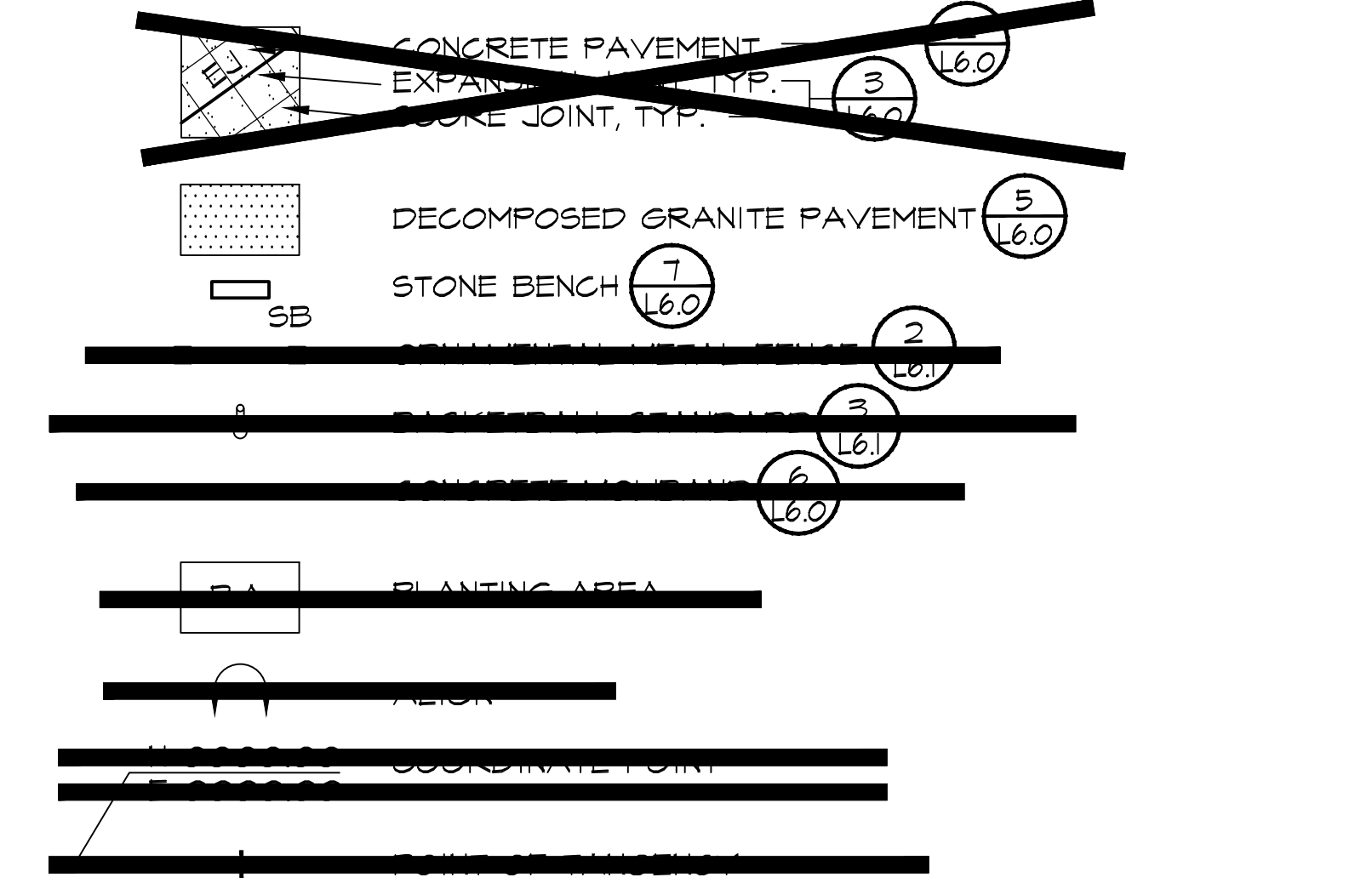


ALIGN OUTSIDE FACE OF FENCE WITH BUILDING FACE, TYP.

EDUCATIONAL PARK DRIVE

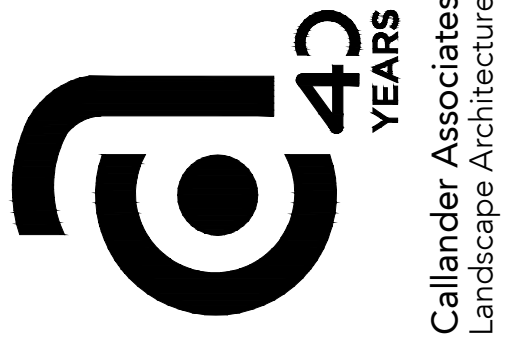


**SITE CONSTRUCTION LEGEND**

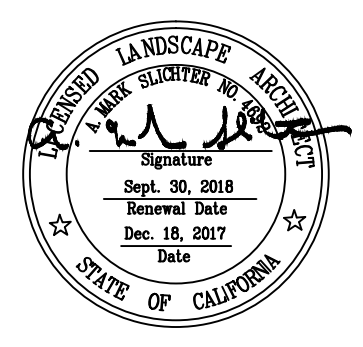


**SITE CONSTRUCTION NOTES**

- DIMENSIONS:** ALL WRITTEN DIMENSIONS SUPERSEDE SCALED DIMENSIONS.
- EXPANSION JOINTS:** INSTALL EXPANSION JOINTS AS SHOWN ON DRAWINGS, AS WELL AS BETWEEN CONCRETE FLATWORK AND WALLS, CURBS, AND EXISTING FLATWORK OR STRUCTURES.
- SLEEVING:** REFER TO IRRIGATION PLAN FOR REQUIREMENTS OF SLEEVING UNDER PAVING.
- PROJECT STAKING:** ALL PROPOSED SITE FEATURES SHALL BE STAKED IN FIELD FOR REVIEW BY THE DISTRICT'S REPRESENTATIVE PRIOR TO CONSTRUCTION. ALL CURVES SHALL BE SMOOTH AND CONTINUOUS WITH CAREFULLY MATCHED TANGENTS.



**DTA**  
Dreiling Terrones Architecture Inc.  
Architecture  
Infrastructure  
Environments



**Building J Landscape Plans**

Independence High School  
1776 Educational Park Dr  
San Jose, CA 95133

East Side Union High School District

Site Construction Plan

Drawn by: AG  
Checked by: ZK  
Cvd file: 15051.SC  
JOB # 15051

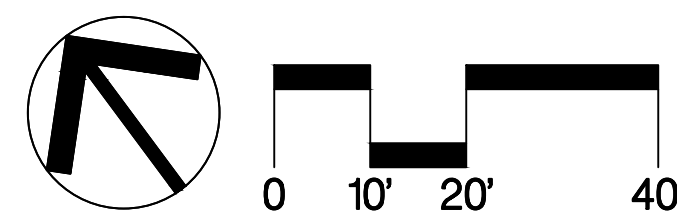
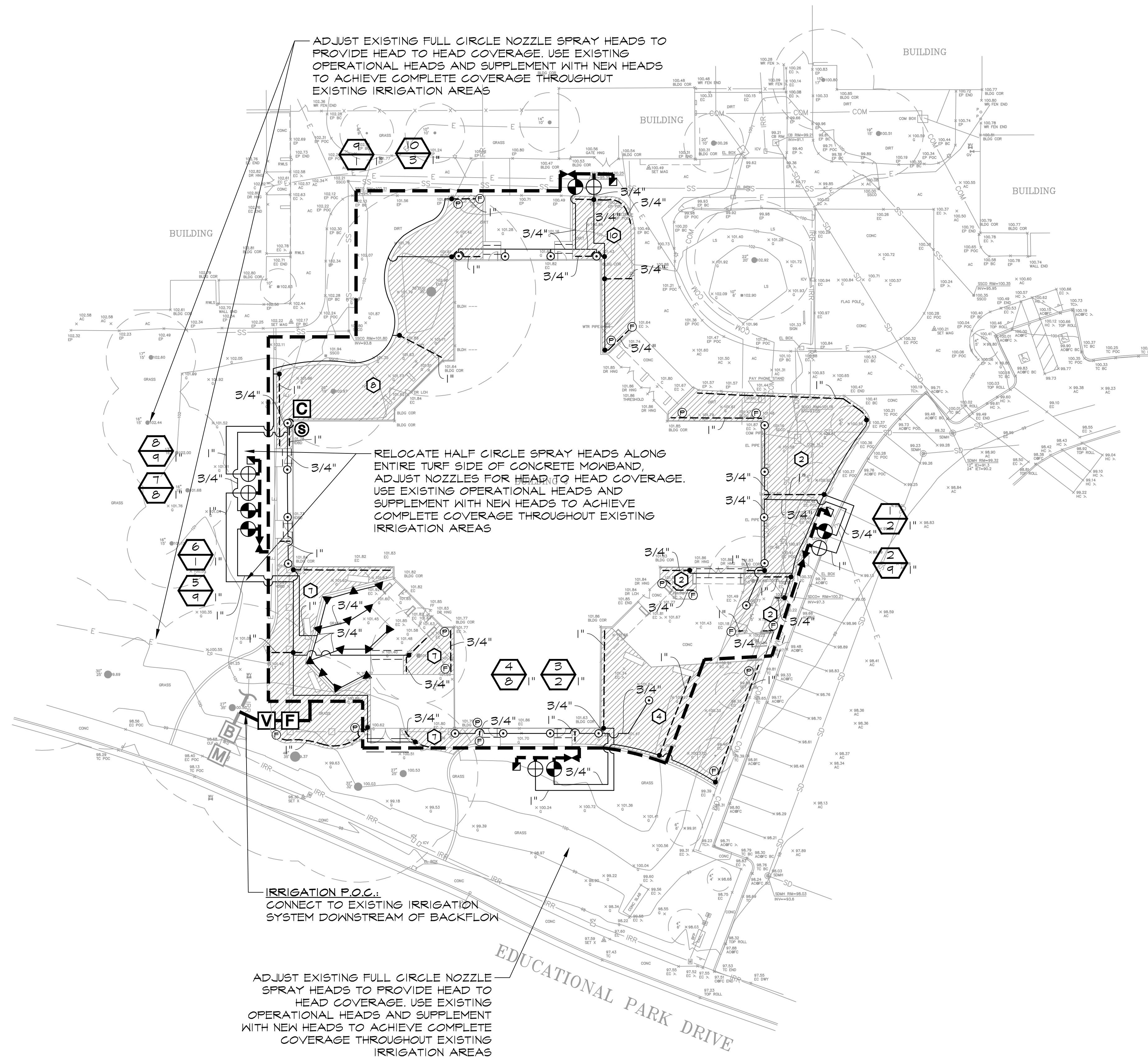
L3.0

1103 Juenteo Avenue  
San Jose, California  
94110  
650.666.1200

314 Carter Street #220  
Livermore, California  
94550  
925.433.1335

1633 BAYSHORE HWY  
Suite 113  
San Jose, CA 95131  
Tel: 408.253.3313  
Fax: 408.253.3290

2017-12-18: Alternate Bid



**IRRIGATION LEGEND**

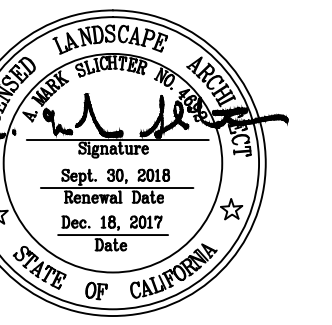
- SHRUB AND GROUNDCOVER IN-LINE DRIP IRRIGATION, RAINBIRD, XFCV SERIES DRIFLINE, 0.6 GPH EMITTER FLOW AND 18-INCH EMITTER SPACING. SPACE EMITTER LINE ROWS AT 18-INCHES ON CENTER. INSTALL ALL LINES AT GRADE AND COVER WITH MULCH PER PLANTING PLAN. REVIEW LAYOUT WITH MANUFACTURER'S REPRESENTATIVE PRIOR TO CONSTRUCTION, LUKE TIMMONS, (818) 738-8280
- BUBBLER, RAINBIRD, 1806-PA-80-140I EACH SYMBOL REPRESENTS 2 BUBBLERS PER TREE, 1 BUBBLER PER VINE
- TURF SPRAY, RAINBIRD, RD-06-S-P45-MPR, 10 SERIES, ARC AS REQUIRED
- REMOTE CONTROL VALVE, RAINBIRD, PESB SERIES SIZE PER PLAN
- DRIP REMOTE CONTROL ZONE KIT, RAINBIRD, XCZ-FRB-100-COM, 1" SIZE
- CONTROLLER, RAINBIRD, ESP-12LXMEF, SURFACE MOUNT
- MASTER VALVE, SUPERIOR, 3100 SERIES, NORMALLY OPEN, LINE SIZE
- FLOW SENSOR, RAINBIRD, FS150B
- WEATHER SENSOR, RAINBIRD, WR2-RFC
- DRIP HEADER, SCH 40 PVC, SIZE PER PLAN
- LATERAL / HEADER CONNECTION
- LATERAL LINE, SCH 40 PVC, SIZE PER PLAN
- MAINLINE, 2", CLASS AS REQUIRED PER SPECS.
- SLEEVE, SCH 40 PVC, INSTALLED BY OTHERS
- QUICK COUPLING VALVE, RAINBIRD, 44-LRC
- GATE VALVE, NIBCO, CLASS 125, T-113, LINE SIZE, INSTALL IN VALVE BOX
- FLUSH VALVE, TORO, T-FCH-H-FIPT, INSTALL AT LOW END OF DRIP HEADER LINE
- POP-UP INDICATOR, HUNTER, ECO-ID, INSTALL AT HIGH END OF DRIP HEADER LINE
- VALVE NUMBER FOR DRIP AREA
- VALVE # APPROXIMATE GPM THROUGH VALVE VALVE SIZE

**EXISTING IRRIGATION LEGEND**

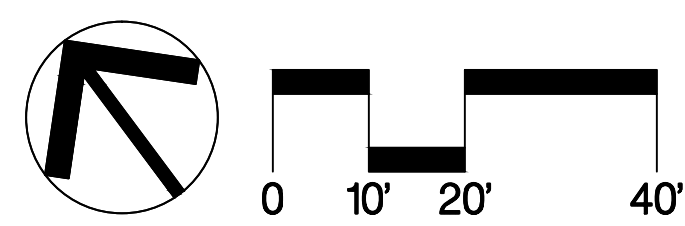
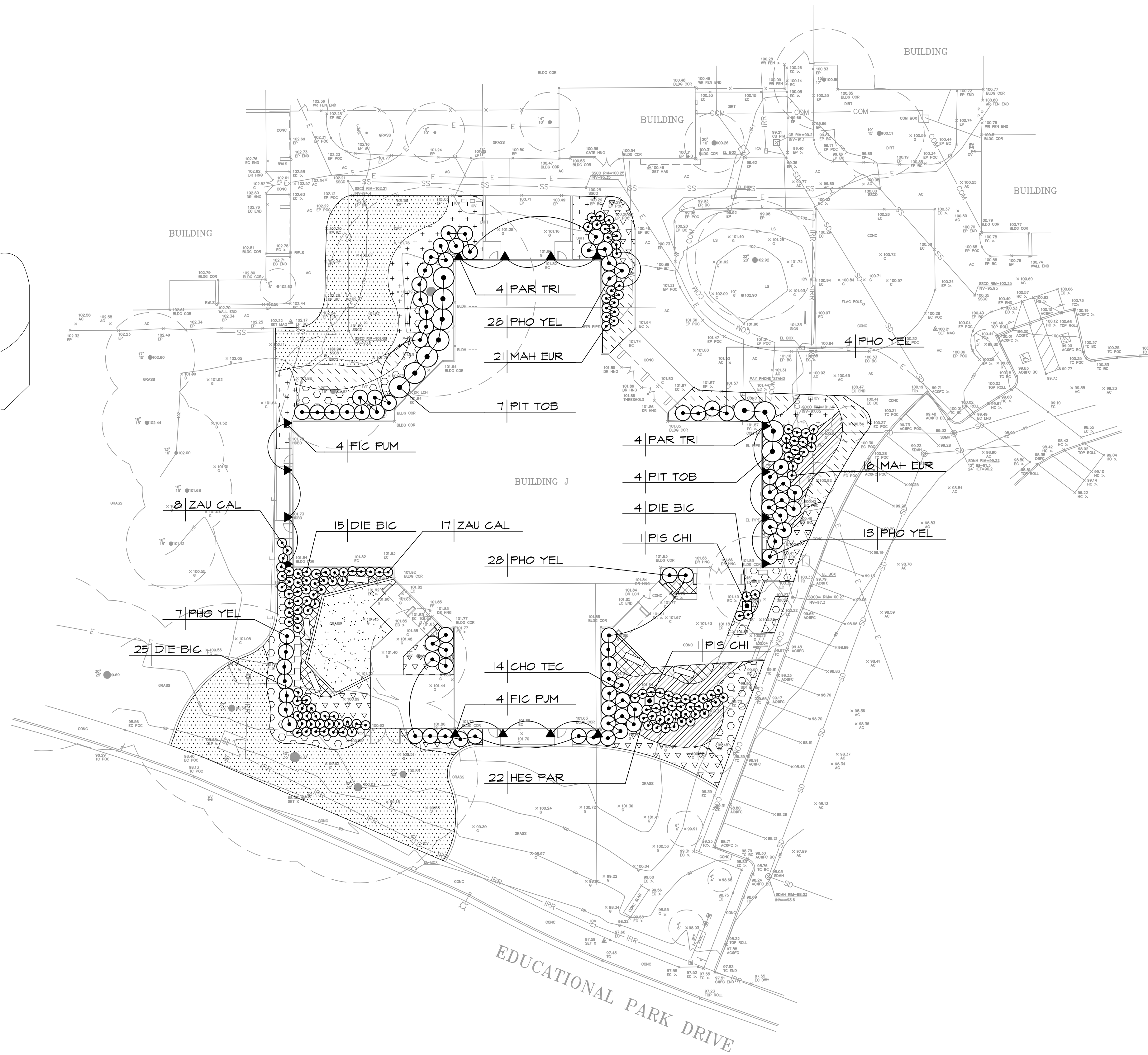
- BACKFLOW PREVENTER
- WATER METER
- MASTER VALVE
- FLOW SENSOR
- MAIN LINE

**IRRIGATION NOTES**

1. **SPECIFICATIONS:** SEE IRRIGATION SPECIFICATIONS FOR ADDITIONAL INFORMATION.
2. **VERIFICATION:** SYSTEM DESIGN IS BASED ON 60 P.S.I. AND 4 G.P.M. AVAILABLE AT DISCHARGE OUTLET OF METER OR OTHER POINT OF CONNECTION. VERIFY SAME AND NOTIFY DISTRICT'S REPRESENTATIVE IF LOWER FIGURES ARE RECORDED DURING VERIFICATION. SUCH NOTICE SHALL BE MADE IN WRITING AND PRIOR TO COMMENCING ANY IRRIGATION WORK.
3. **UTILITIES:** VERIFY LOCATION OF ALL ON-SITE UTILITIES. RESTORATION OF DAMAGED UTILITIES SHALL BE MADE AT THE CONTRACTOR'S EXPENSE TO THE SATISFACTION OF THE DISTRICT.
4. **SCHEMATIC:** SYSTEM FEATURES ARE SHOWN SCHEMATICALLY FOR GRAPHIC CLARITY. INSTALL ALL PIPING AND VALVES IN COMMON TRENCHES WHERE FEASIBLE AND INSIDE PLANTING AREAS WHENEVER POSSIBLE. ALL VALVES SHALL BE LOCATED IN GROUNDCOVER OR SHRUB AREAS WHENEVER POSSIBLE.
5. **CODES:** IRRIGATION SYSTEM SHALL BE INSTALLED IN ACCORDANCE WITH ALL LOCAL CODES AND MANUFACTURER'S SPECIFICATIONS. NOTIFY DISTRICT'S REPRESENTATIVE BY TELEPHONE AND IN WRITING OF ANY CONFLICTS PRIOR TO INSTALLATION.
6. **SLEEVING:** ADEQUATELY SIZE ALL SLEEVES SHOWN ON PLAN. SLEEVES SHALL BE INSTALLED AT THE NECESSARY DEPTHS PRIOR TO PAVEMENT CONSTRUCTION. SLEEVING SHALL EXTEND 1'-0" FROM EDGE OF PAVING INTO LAWN OR PLANTING AREA, AND SHALL HAVE ENDS CLEARLY MARKED ABOVE GRADE.
7. **QUICK COUPLING VALVES:** INSTALL ON TRIPLE SWING JOINT. LOCATE 12 INCHES AWAY FROM EDGE OF WALKS, WALLS, AND CURBS WITHIN PLANTING AREAS. PROVIDE DISTRICT WITH ONE OPERATING KEY, TWO SETS OF LOCKING COVER KEYS, AND ONE SWIVEL HOSE ELL.
8. **CONTROLLER:** INSTALL CONTROLLER ABOVE FINISHED GRADE AND FASTEN SECURELY TO ENCLOSURE PER MANUFACTURER'S RECOMMENDATION. ALL ABOVE-GRADE CONDUIT EITHER 24V. OR 110V. SHALL BE RIGID STEEL AND SECURELY FASTENED TO ENCLOSURE AND TO CONTROLLER.
9. **MAINLINE BREAK:** SHOULD THE EXISTING MAINLINE BREAK OR BE SHUT OFF FOR ANY REASON DURING THE COURSE OF CONSTRUCTION THE CONTRACTOR SHALL HAND WATER ALL TREES, SHRUBS, TURF, AND GROUNDCOVER THAT THE EXISTING IRRIGATION SYSTEM WATERS. CONTINUE TO DO SO UNTIL THE IRRIGATION SYSTEM IS OPERABLE.
10. **EXISTING IRRIGATION MODIFICATION:** CONTRACTOR SHALL REVIEW THE LAYOUT OF THE EXISTING IRRIGATION TO BE MODIFIED WITH THE DISTRICT'S MAINTENANCE STAFF PRIOR TO MODIFYING EQUIPMENT. CONTRACTOR SHALL ENSURE THAT ALL EXISTING IRRIGATION SYSTEM IS IN WORKING CONDITION AND NOT DAMAGED DURING CONSTRUCTION. CONTRACTOR SHALL CONDUCT A PRE AND POST CONSTRUCTION TEST TO ENSURE WORKING CONDITION AND DOCUMENT ALL EXISTING DEFICIENCY IN THE SYSTEM. ANY DAMAGES INCURRED DURING CONSTRUCTION SHALL BE PREPARED BY THE CONTRACTOR AND SHALL BE RESPONSIBLE FOR ALL ASSOCIATED FEES.







### PLANT LEGEND

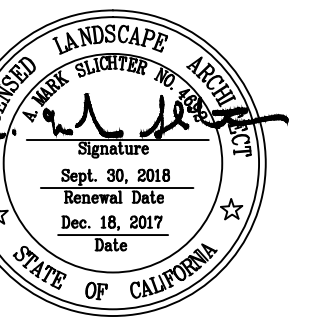
- TREE, 24" BOX SIZE  $\frac{2}{6.5}$
- SHRUB MASS  $\frac{2}{6.5}$
- VINE  $\frac{1}{6.5}$
- MULCH

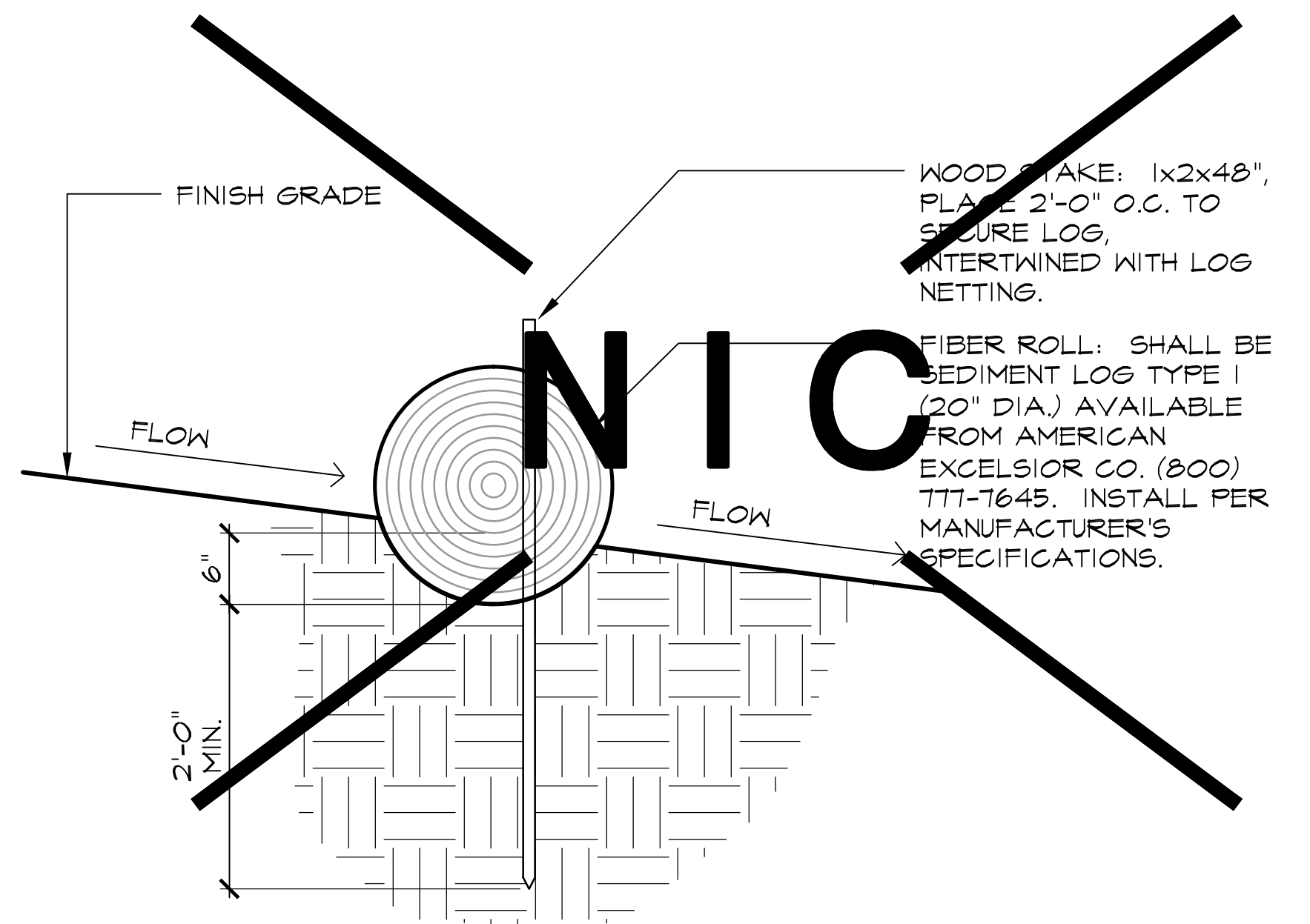
### PLANTING NOTES

1. **MULCH:** INSTALL A UNIFORM THREE INCH COVERING OF WALK-ON MULCH, 1-1/2" MAX PARTICLE SIZE, IN ALL AREAS TO BE PLANTED. MATERIAL AVAILABLE FROM REDI-GRO, (800) 654-4358, OR EQUAL.
2. **EXISTING PLANT MATERIAL:** PROTECT ALL EXISTING PLANT MATERIAL TO REMAIN. REPAIR ANY DAMAGES INCURRED AS A DIRECT RESULT OF THIS CONTRACT TO THE DISTRICT'S SATISFACTION AT NO ADDITIONAL COST.
3. **GROUNDCOVER:** PROVIDE GROUNDCOVER AT INDICATED ON-CENTER SPACING THROUGHOUT ALL AREAS TO BE PLANTED. GROUNDCOVER SHALL BE PROVIDED UP TO THE WATERING BASIN OF ALL TREES AND SHRUBS.
4. **QUANTITIES:** THE QUANTITIES SHOWN ON THE LABELS ARE NOT TO BE CONSTRUED AS THE COMPLETE AND ACCURATE LIMITS OF THE CONTRACT. FURNISH AND INSTALL ALL PLANTS SHOWN SCHEMATICALLY ON THE DRAWINGS.
5. **TOPSOIL:** ALL PLANTING AREAS TO RECEIVE A SIX INCH LAYER OF NATIVE TOPSOIL PER SPECIFICATIONS.
6. **SOILS TESTING:** SEE SPECIFICATIONS FOR TESTING OF TOPSOIL AND AMENDMENTS. IN ADDITION, CONTRACTOR SHALL SUBMIT A FIVE GALLON SAMPLE OF NATIVE TOPSOIL FROM ANY AREAS PREVIOUSLY COVERED BY PAVING, TO WAYPOINT ANALYTICAL, INC. OF SAN JOSE, (408) 727-0330, FOR CONTAMINATION TESTING. TESTING REQUIRES FOUR TO FIVE WEEKS. CONTRACTOR SHALL ALLOW SUFFICIENT TIME FOR TESTING PRIOR TO CONSTRUCTION.

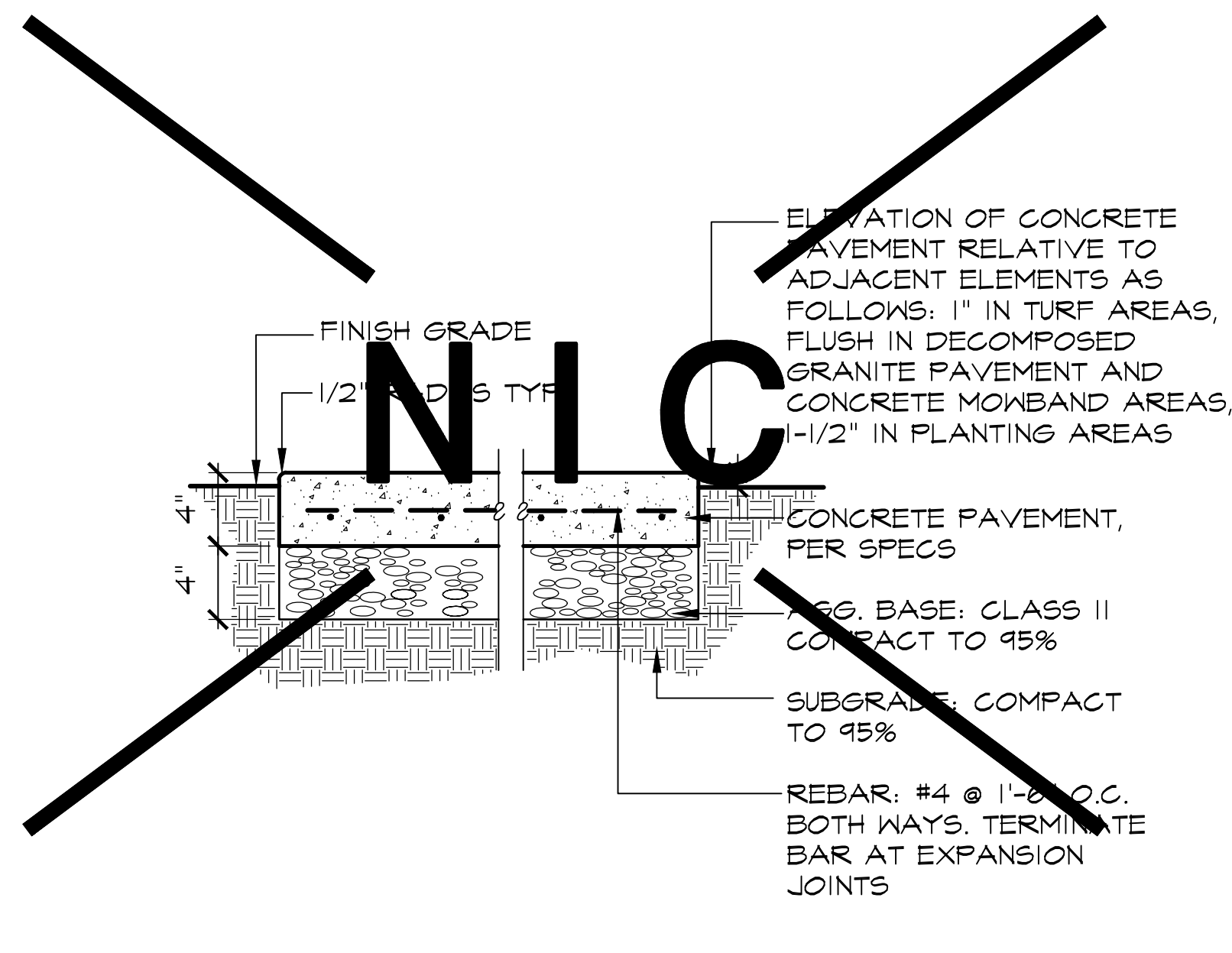
### PLANT LIST

ABBREY.	BOTANICAL NAME	COMMON NAME	SIZE	SPACING	WATER USE
<b>TREES</b>					
PIS CHI	PISTACIA CHINENSIS 'KEITH DAVEY'	FRUITLESS CHINESE PISTACHE	AS SHOWN	AS SHOWN	LOW
<b>SHRUBS AND GRASSES</b>					
CHO TEC	CHONDROPETALUM TECTORUM	CAPE RUSH	1 GALLON	3'-0" O.C.	LOW
DIE BIC	DIETES BICOLOR	FORTNIGHT LILY	1 GALLON	3'-0" O.C.	LOW
HES PAR	HESPERALOE PARVIFLORA	RED YUCCA	1 GALLON	3'-0" O.C.	LOW
MAH EUR	MAHONIA EURYBRACTEATA 'SOFT CARESS'	SOFT CARESS OREGON GRAPE	1 GALLON	3'-0" O.C.	LOW
PHO YEL	PHORMIUM 'YELLOW WAVE'	NEW ZEALAND FLAX	5 GALLON	5'-0" O.C.	LOW
PIT TOB	PITTOSPORUM TOBIRA 'VARIEGATA'	JAPANESE MOCK ORANGE	5 GALLON	7'-0" O.C.	LOW
ZAU CAL	ZAUSCHNERIA CALIFORNICA	CALIFORNIA FUCHSIA	1 GALLON	3'-0" O.C.	LOW
<b>GROUNDCOVERS</b>					
	BULBINE FRUTESCENS 'HALLMARK'	STALKED BULBINE	1 GALLON	2'-0" O.C.	LOW
	CEANOTHUS 'CENTENNIAL'	CENTENNIAL WILD LILAC	1 GALLON	6'-0" O.C.	LOW
	CORREA 'CARMINE BELLS'	AUSTRALIAN FUCHSIA	1 GALLON	4'-0" O.C.	LOW
	COTONEASTER DAMMERI 'LOWFAST'	BEARBERRY COTONEASTER	1 GALLON	6'-0" O.C.	LOW
	DYMONDIA MARGARETAE	SILVER CARPET	1 GALLON	1'-6" O.C.	LOW
	PENSTEMON HETEROPHYLLUS 'MARGARITA BOP'	FOOTHILL PENSTEMON	1 GALLON	2'-6" O.C.	LOW
	SALVIA LEUCOPHYLLA 'POINT SAL SPREADER'	PURPLE SAGE	1 GALLON	6'-0" O.C.	LOW
	TURF FROM 90D, 90/10 TALL FESCUE MIX. AVAILABLE THROUGH DELTA BLUEGRASS COMPANY (209) 469-7979				
<b>VINES</b>					
FIG PUM	FIGUS PUMILA	CREeping FIG	1 GALLON	AS SHOWN	MOD
PAR TRI	PARTHENOISSUS TRICUSPIDATA	BOSTON IVY	1 GALLON	AS SHOWN	LOW

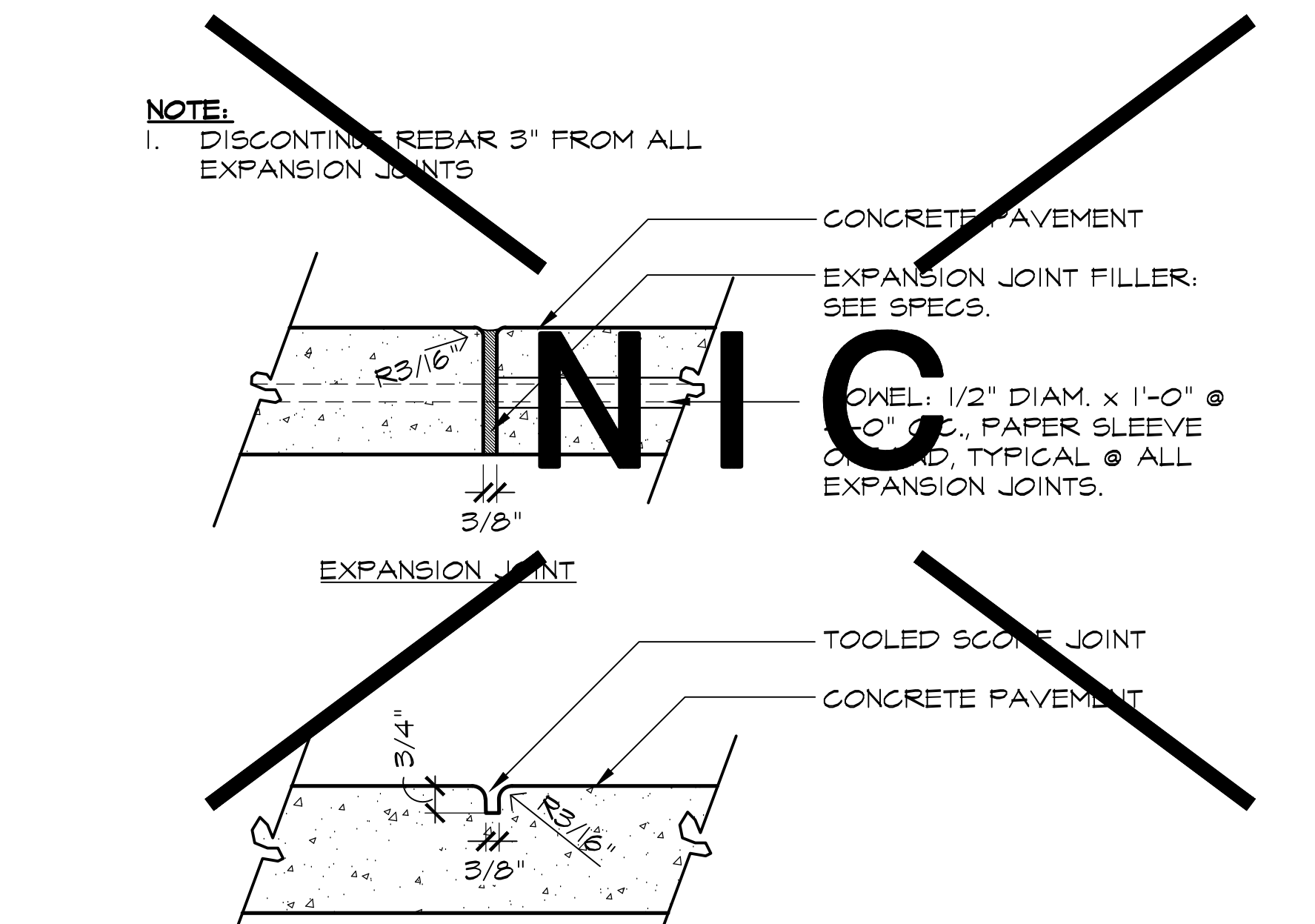




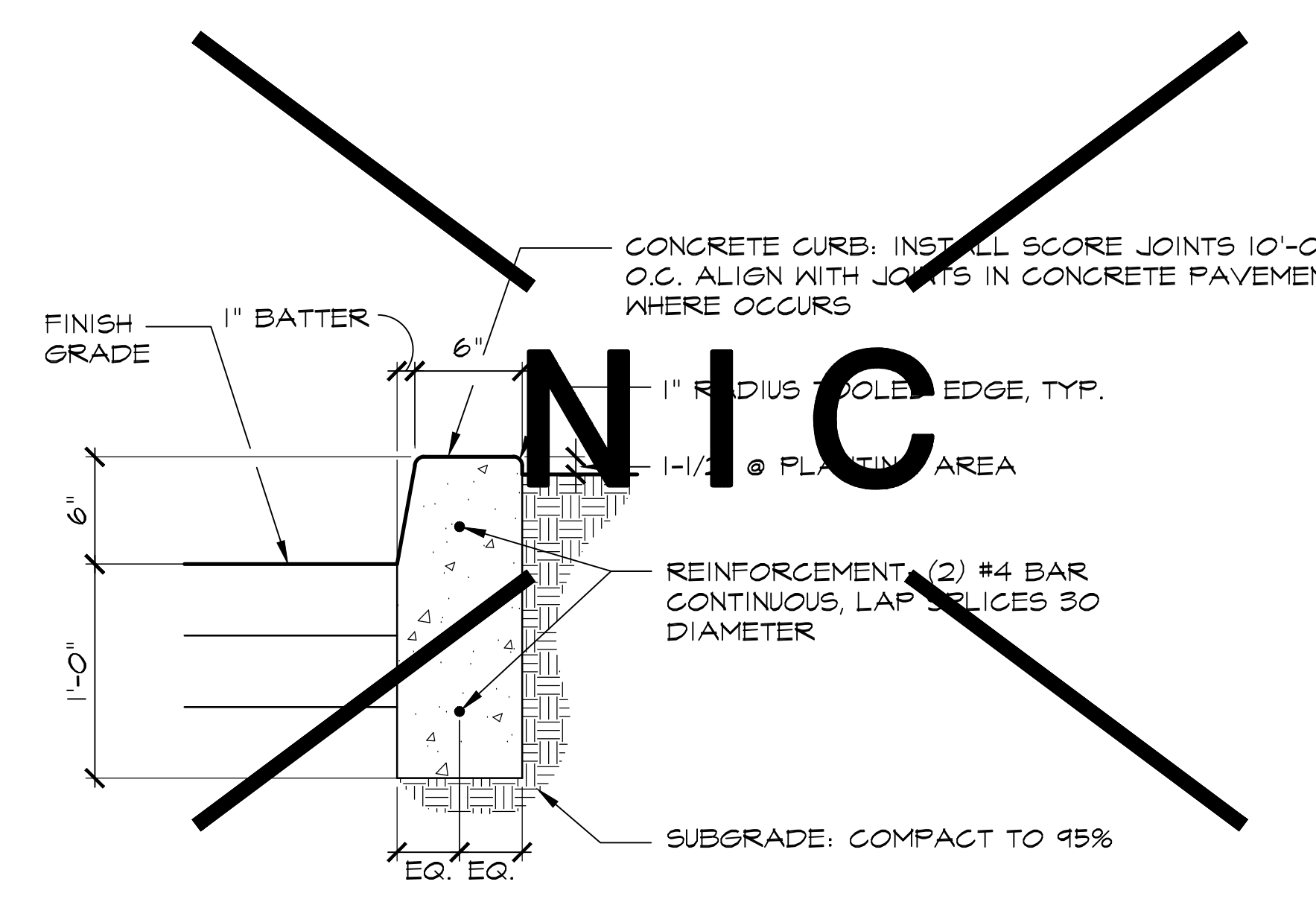
**1** FIBER ROLL SECTION  
L6.0



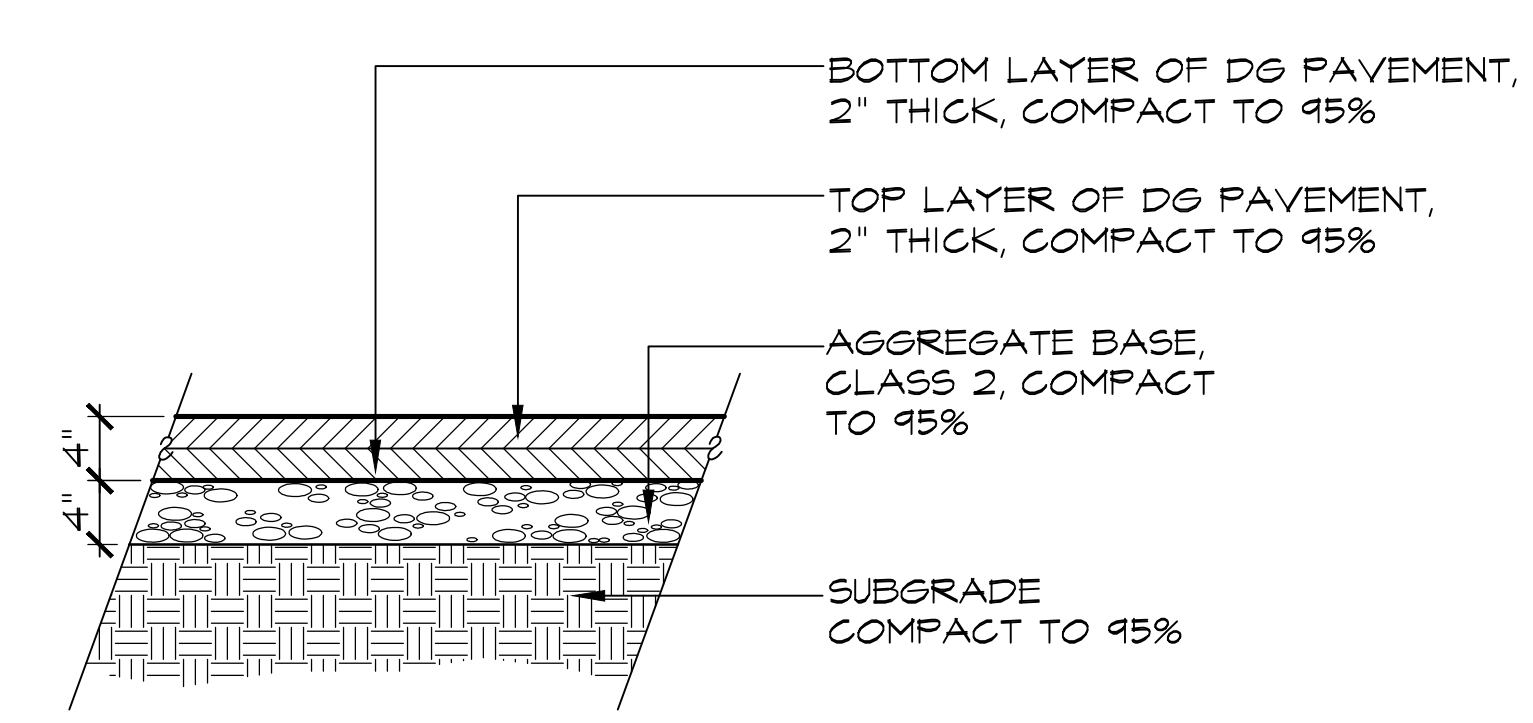
**2** CONCRETE PAVEMENT SECTION  
L6.0



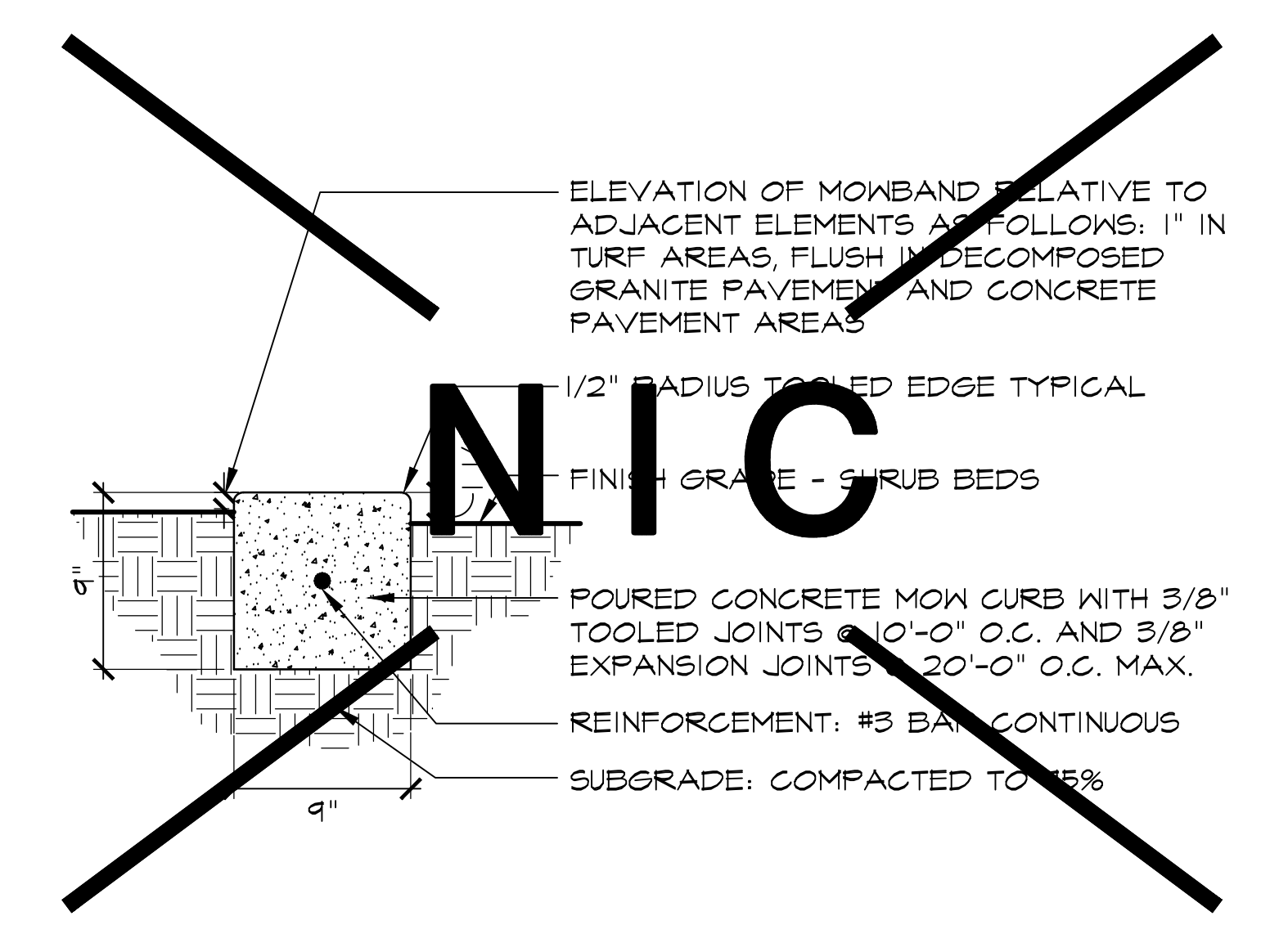
**3** CONCRETE JOINTS SECTION  
L6.0



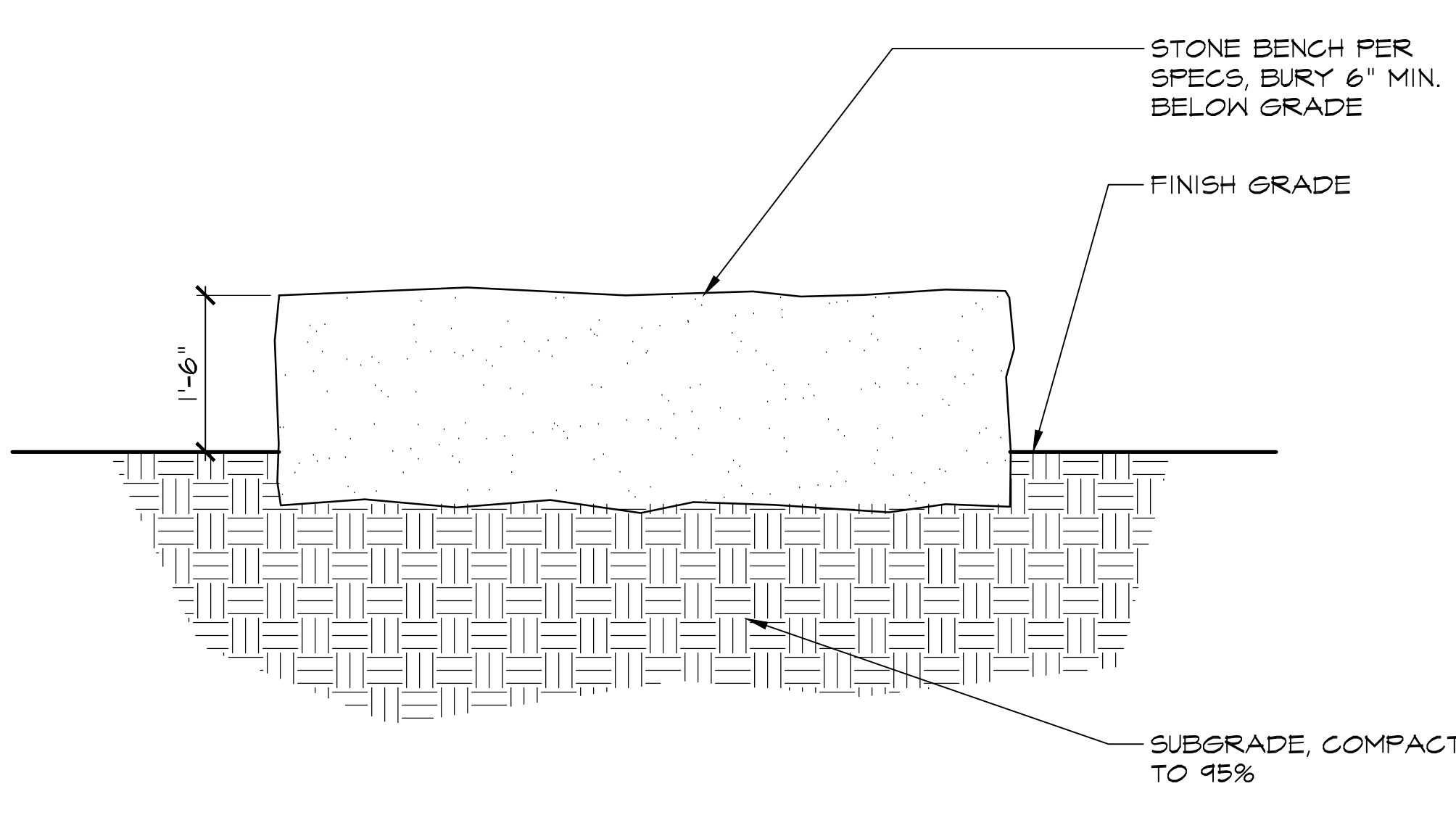
**4** CONCRETE CURB SECTION  
L6.0



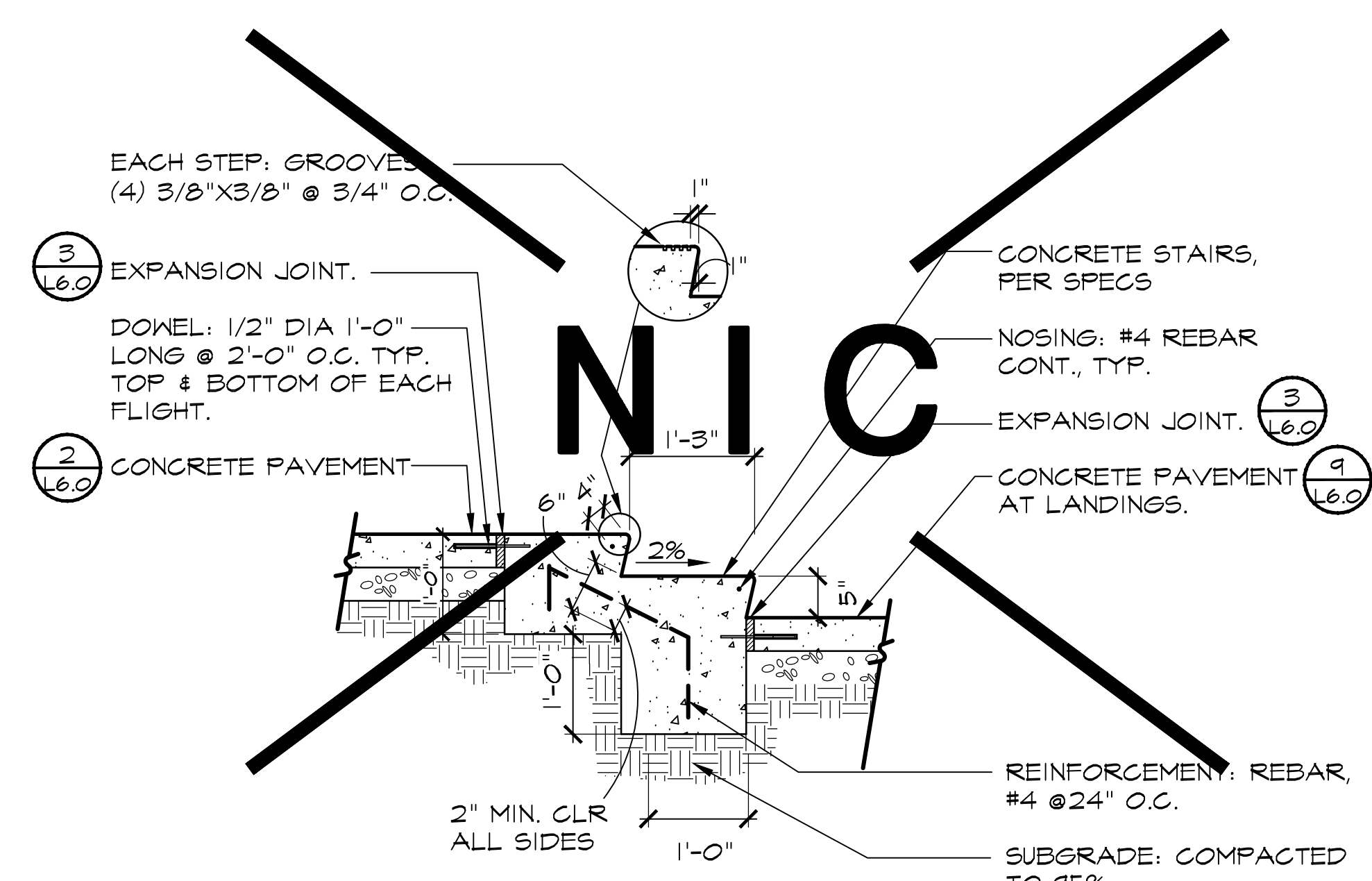
**5** DECOMPOSED GRANITE PAVEMENT SECTION  
L6.0



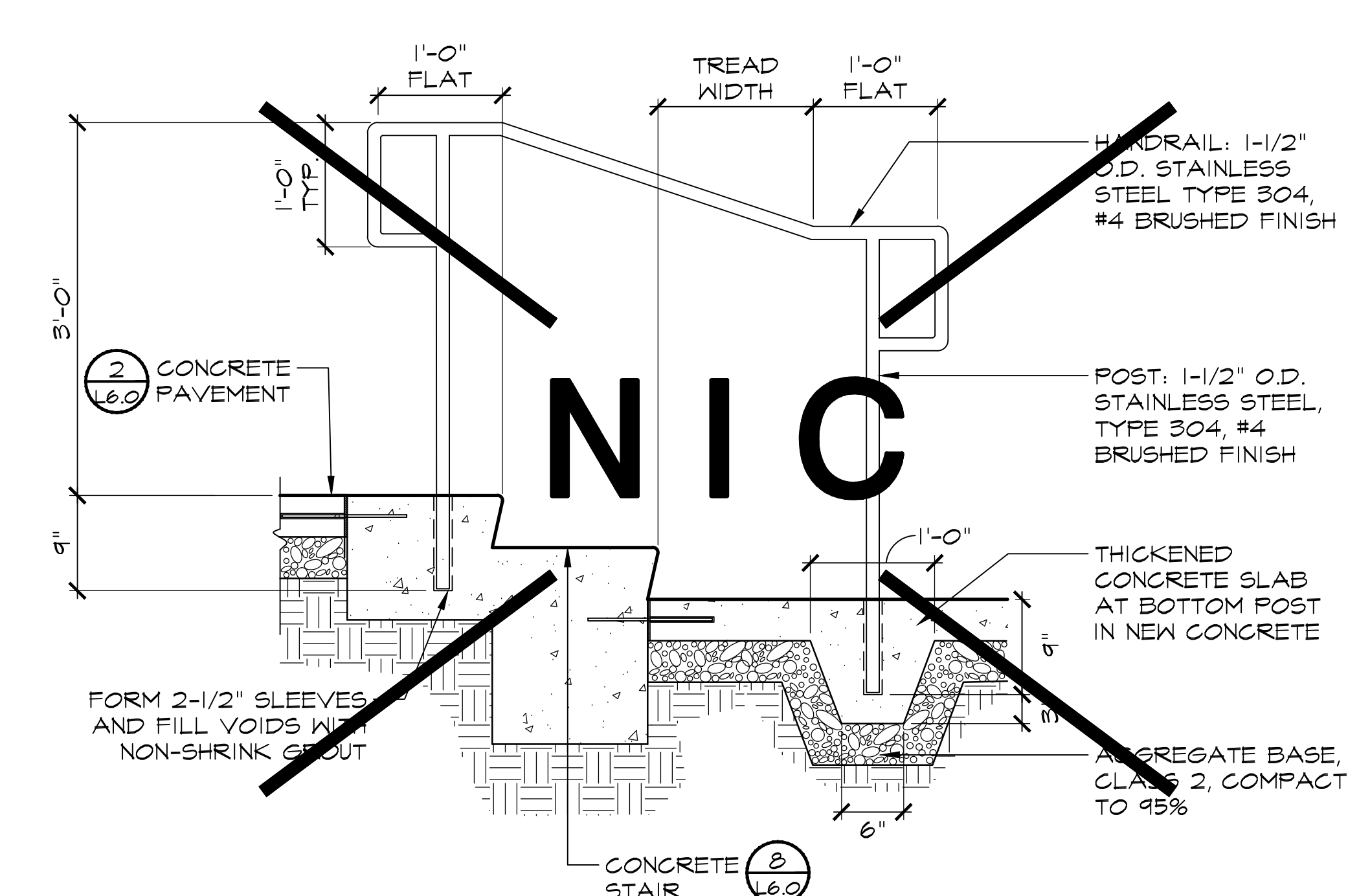
**6** CONCRETE MOWBAND SECTION  
L6.0



**7** STONE BENCH SECTION  
L6.0

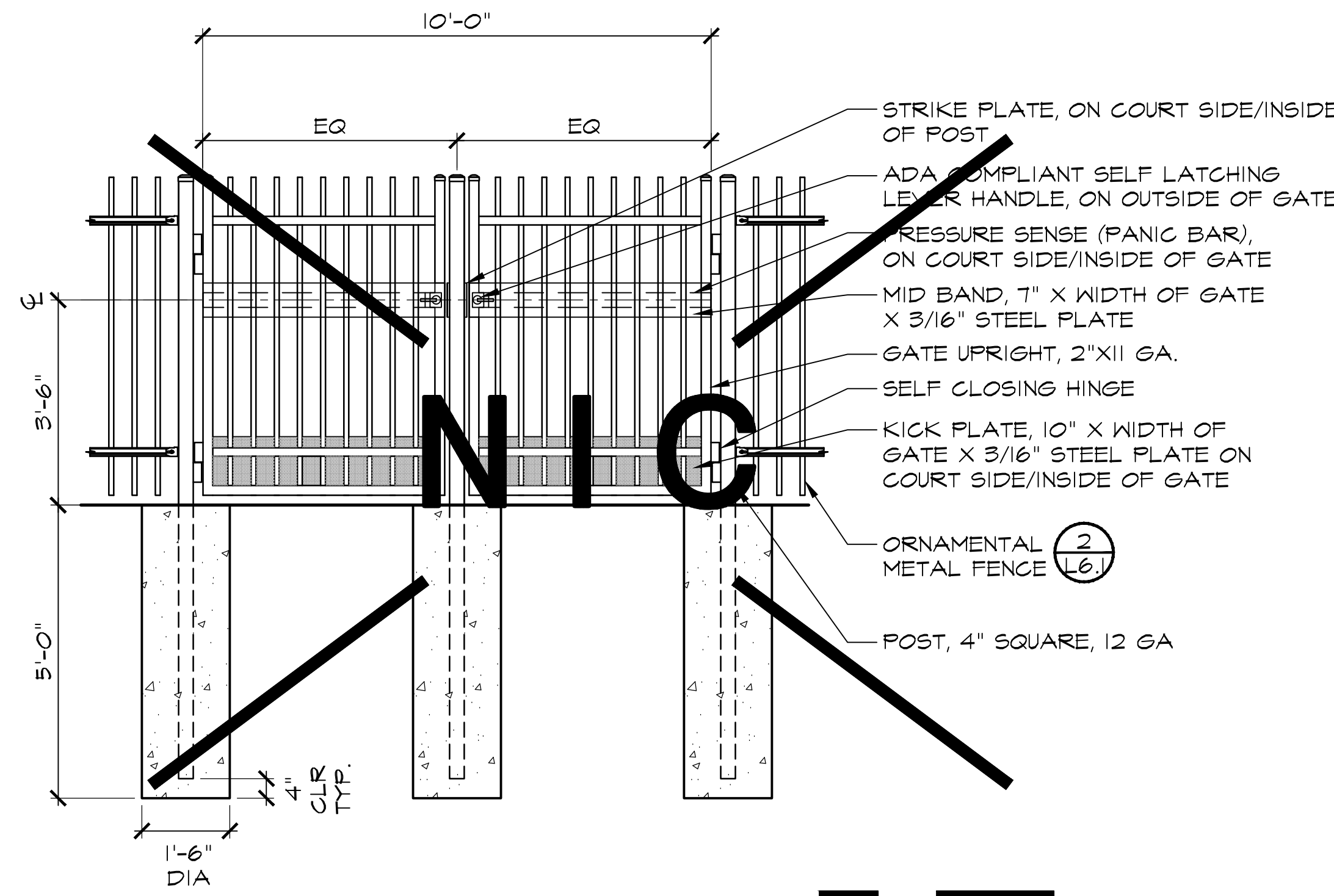


**8** CONCRETE STAIR SECTION  
L6.0

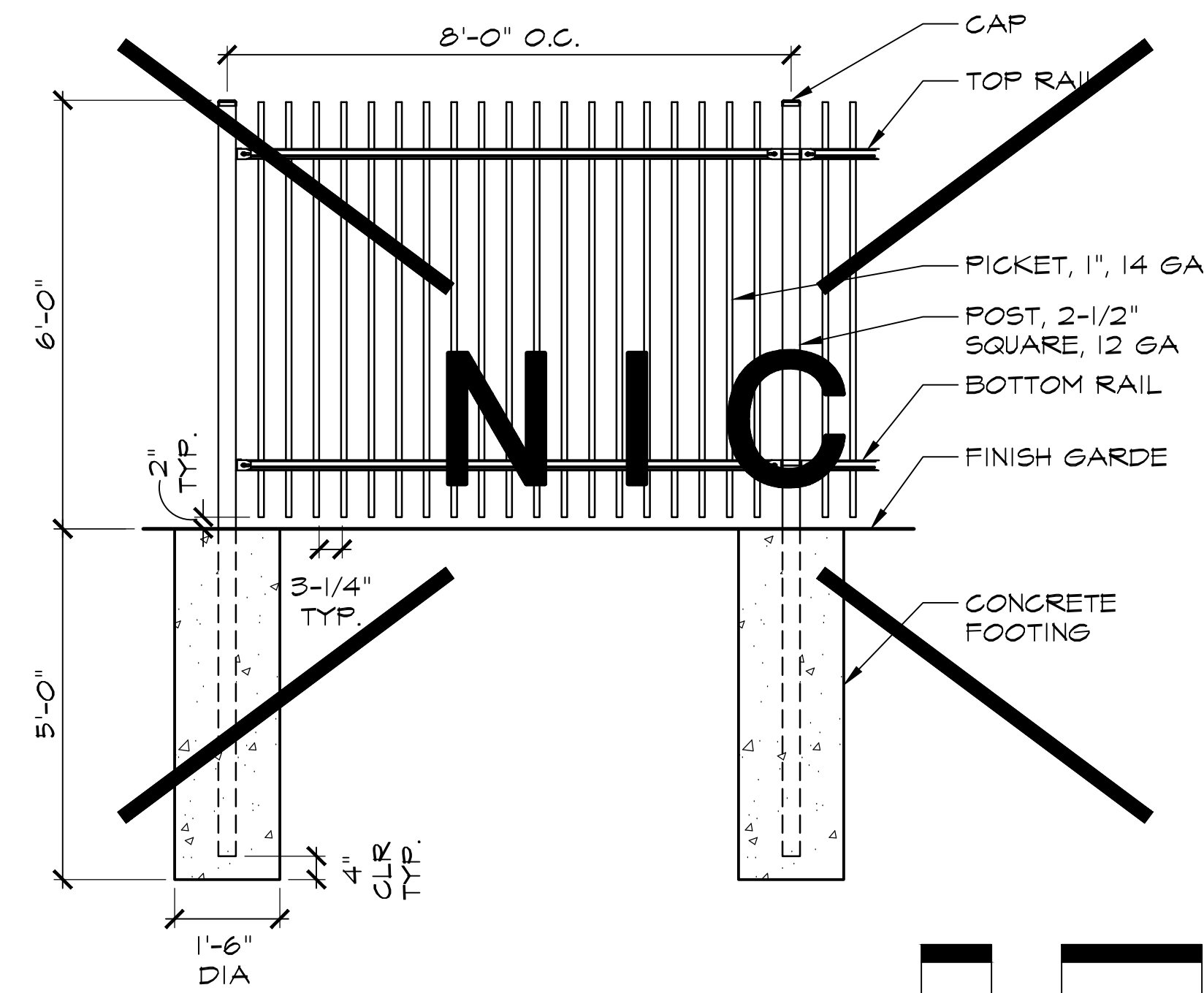


**9** HANDRAIL AT STAIR SECTION  
L6.0

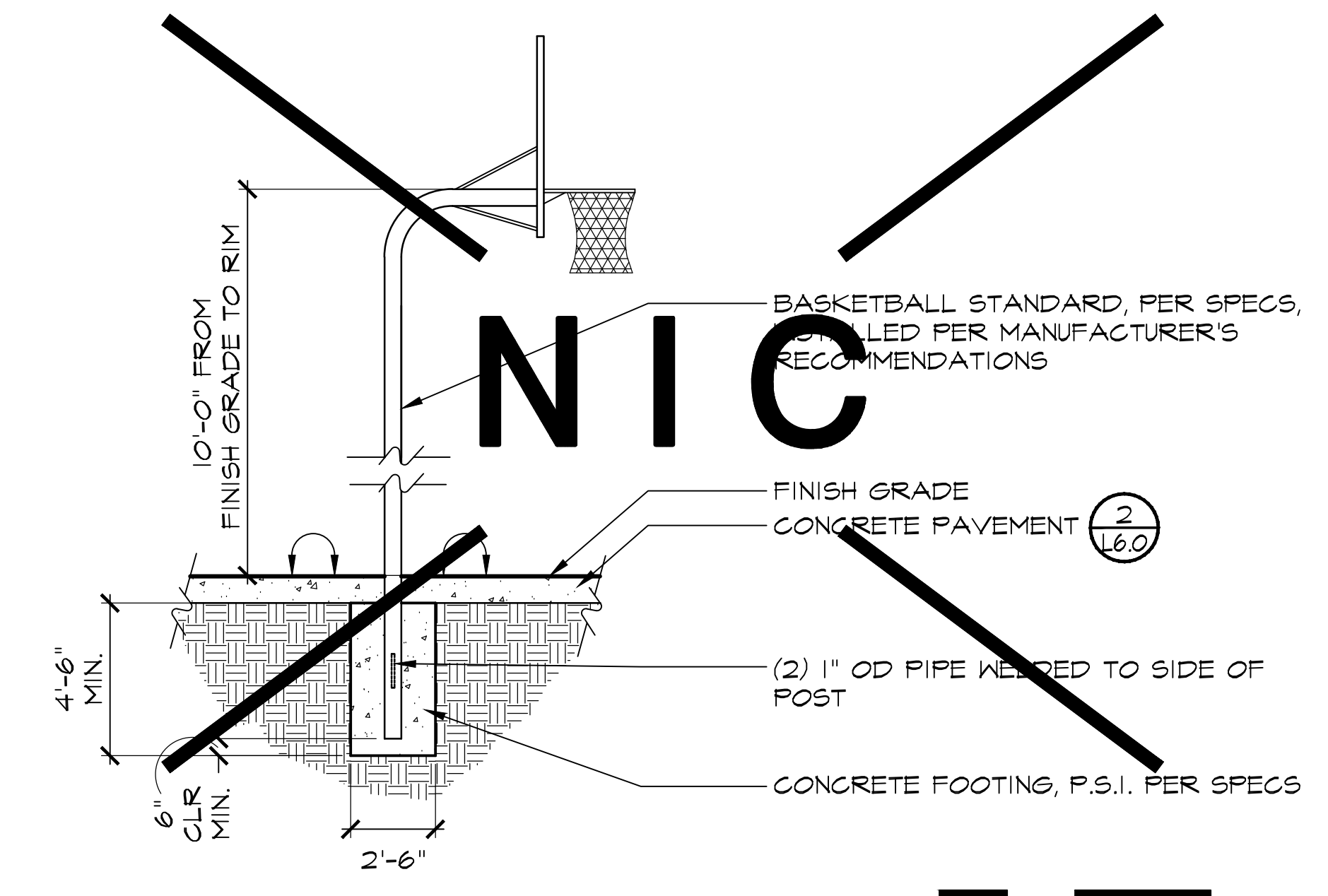
- NOTE:**
- CONTRACTOR SHALL SUPPLY SHOP DRAWINGS OF ORNAMENTAL DOUBLE GATE FOR DISTRICT REVIEW AND APPROVAL.
  - ALL CONNECTIONS TO BE WELDED PER SPECS



**1** ORNAMENTAL METAL GATE  
**L6.1** SECTION  
15051 Ornamental Metal Gate 2 24.dwg

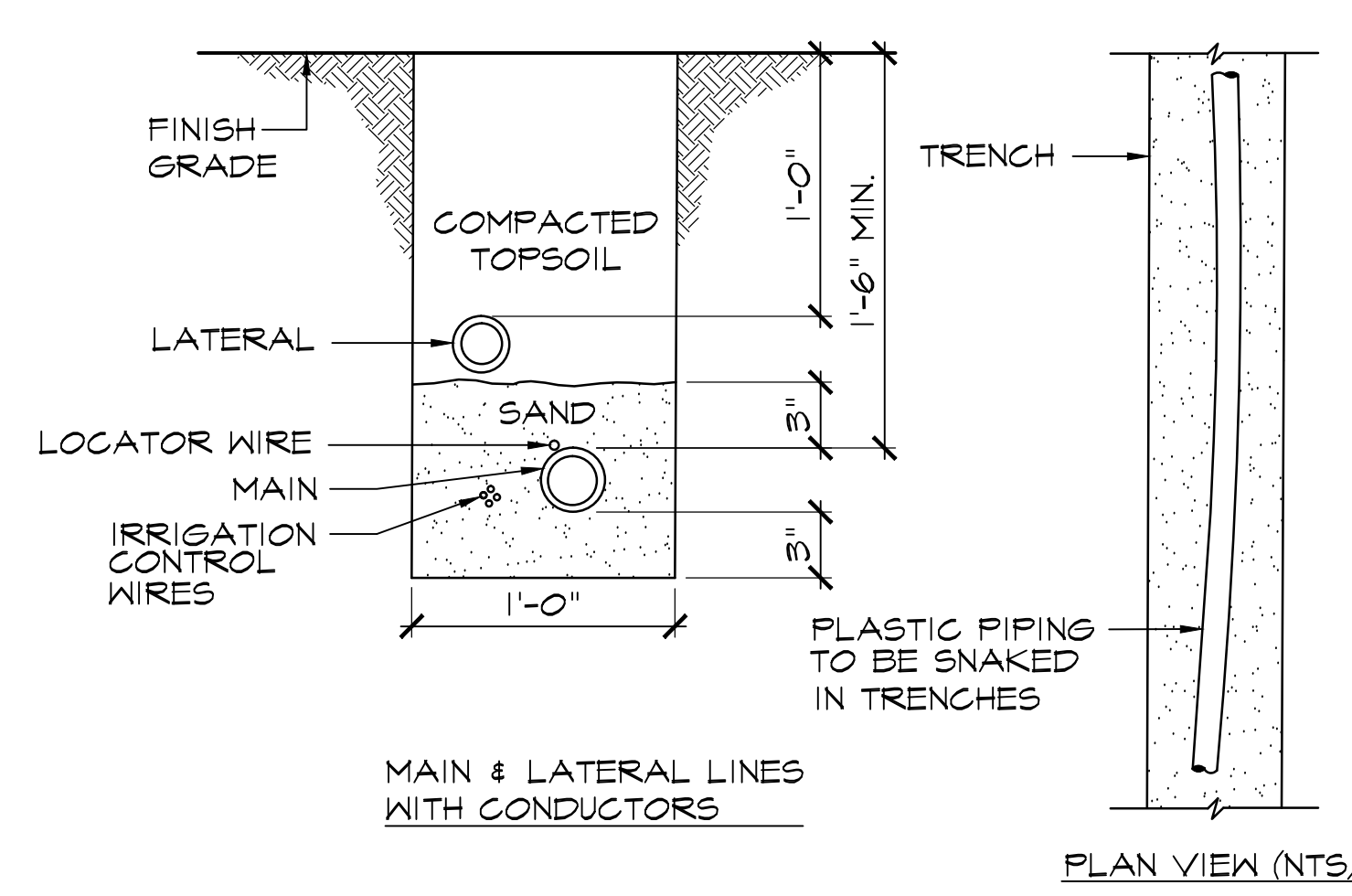


**2** ORNAMENTAL METAL FENCE  
**L6.1** SECTION  
15051 Ornamental Metal Fence 24.dwg

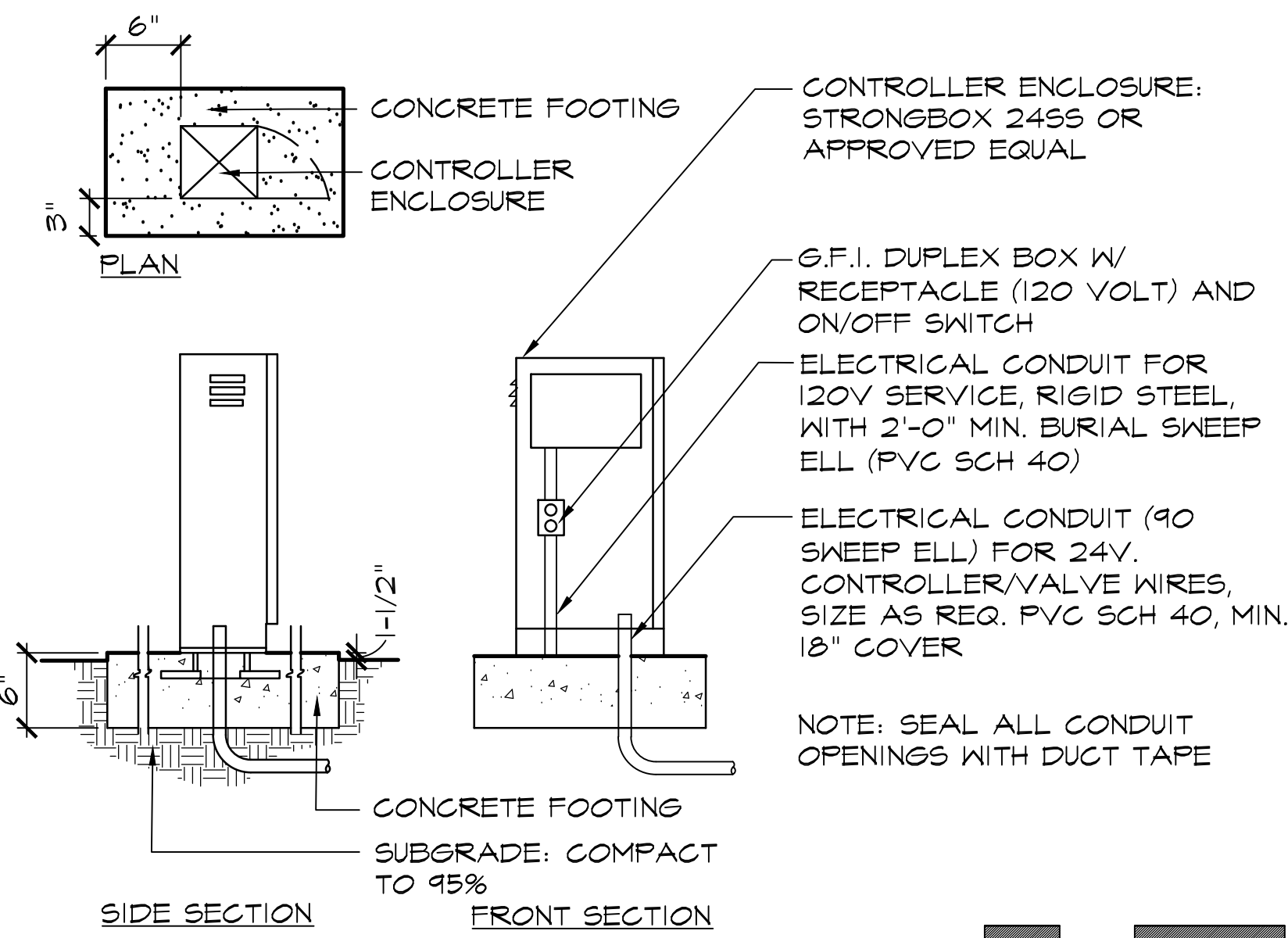


**3** BASKETBALL STANDARD  
**L6.1** SECTION  
15051 BasketballNet\_48.dwg

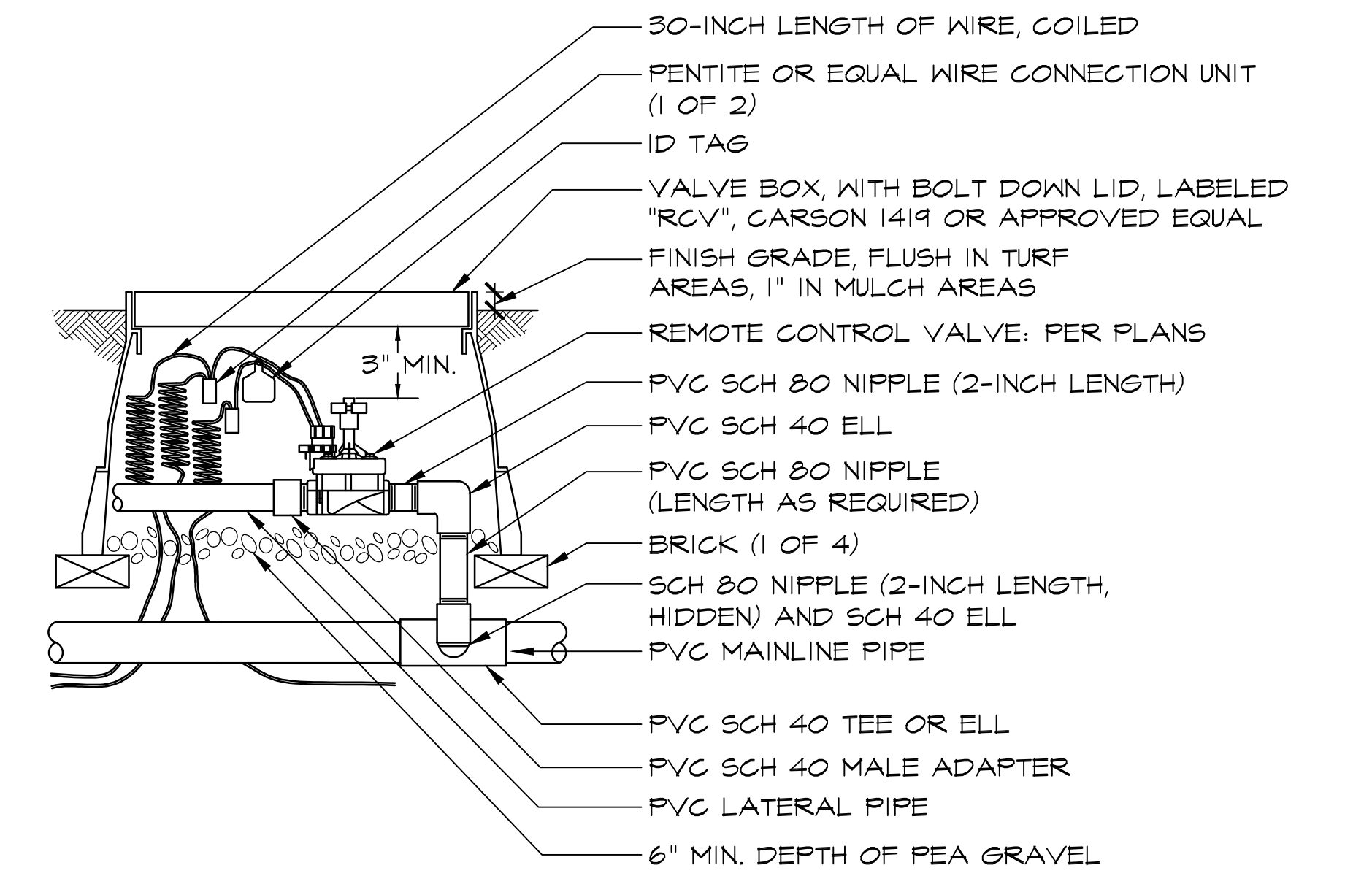
**NOTE:**  
TAPE AND BUNDLE WIRING AT 10'-0" INTERVALS.



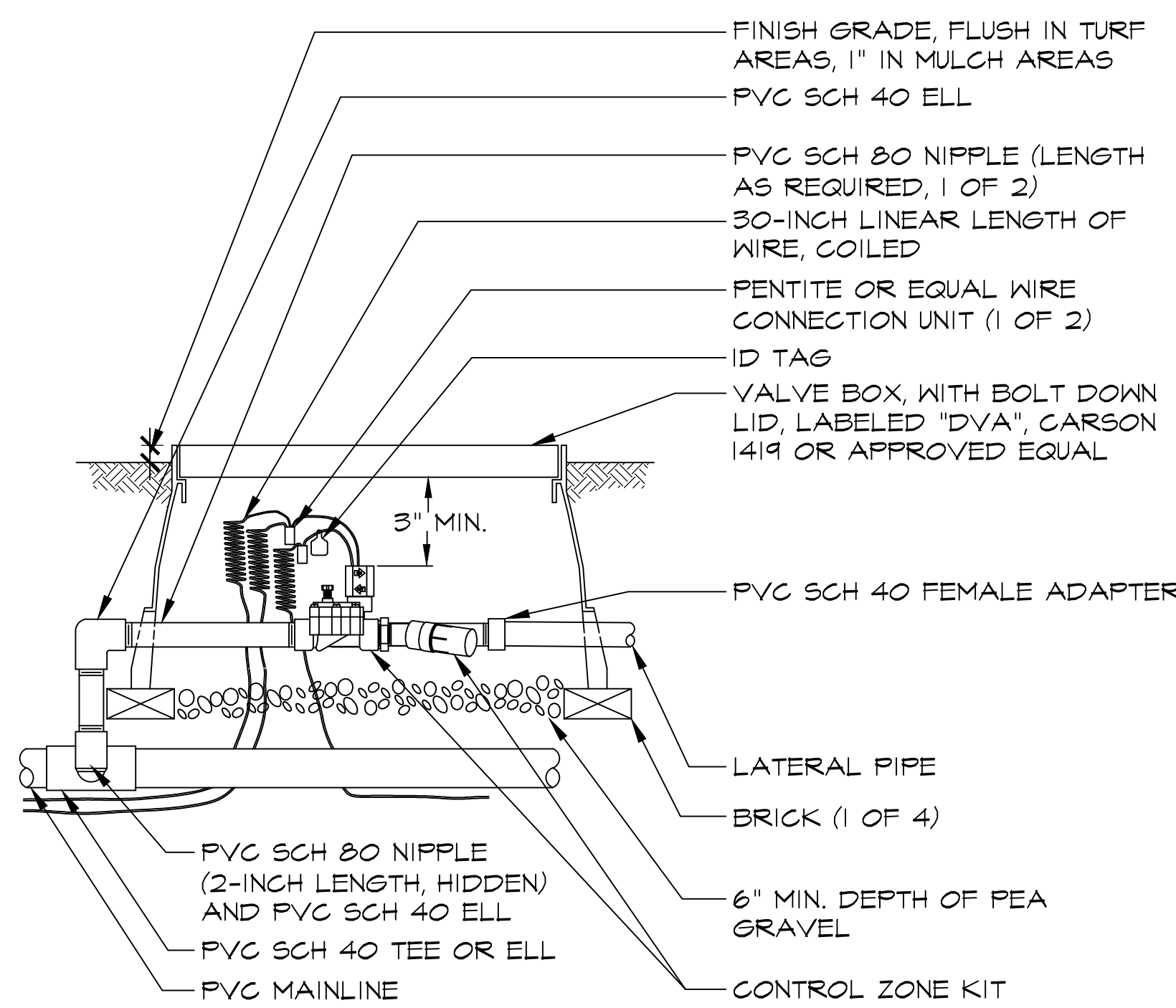
**4** IRRIGATION TRENCHING  
**L6.1** SECTION  
15051 Irrigation Trenching 8.dwg



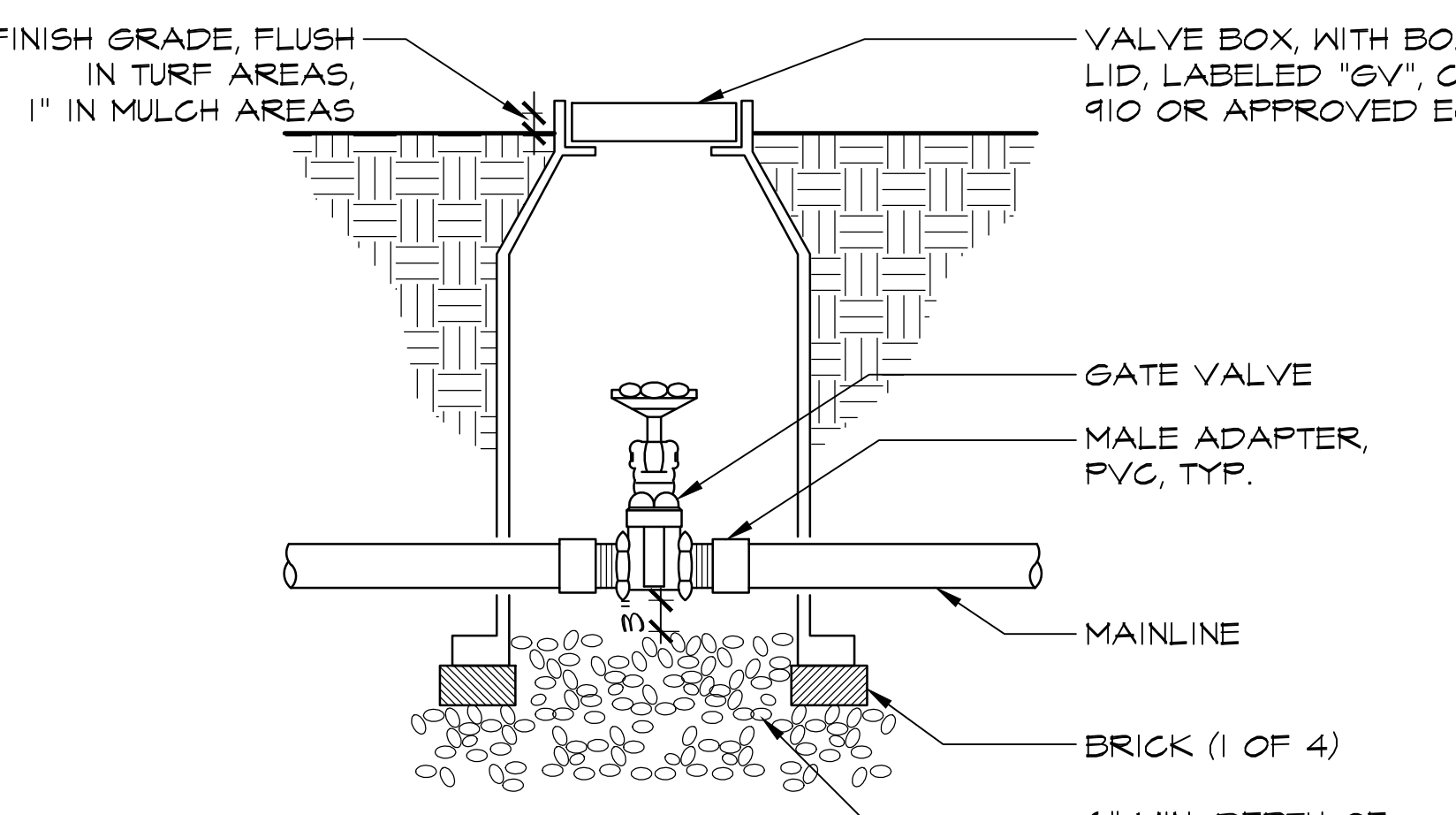
**5** CONTROLLER  
**L6.1** SECTION  
15051 Controller 2 12.dwg



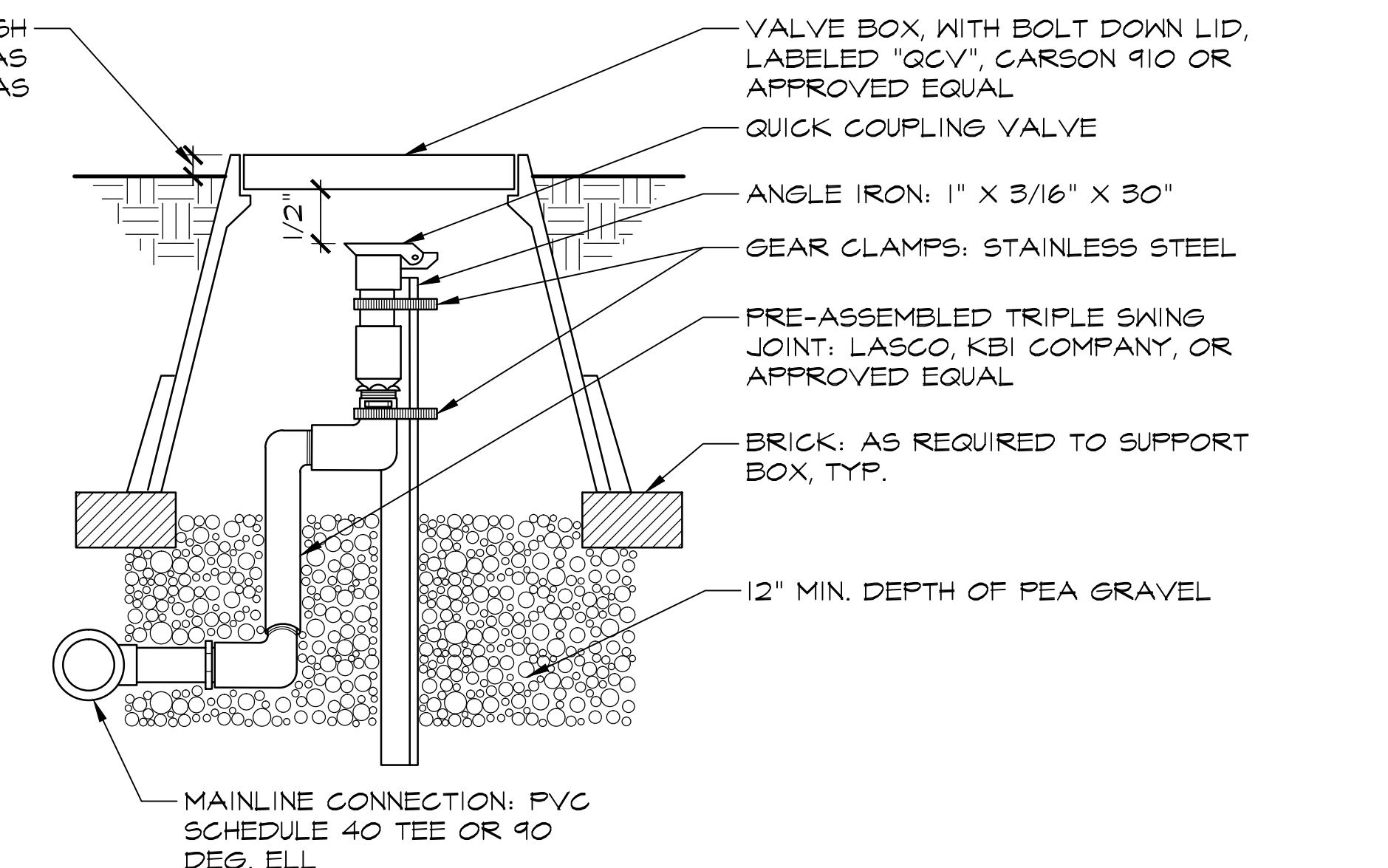
**6** REMOTE CONTROL VALVE  
**L6.1** SECTION  
15051 Remote Control Valve 1 4.dwg N.T.S.



**7** DRIP REMOTE CONTROL ZONE KIT  
**L6.1** SECTION  
15051 Drip Valve 1.dwg N.T.S.



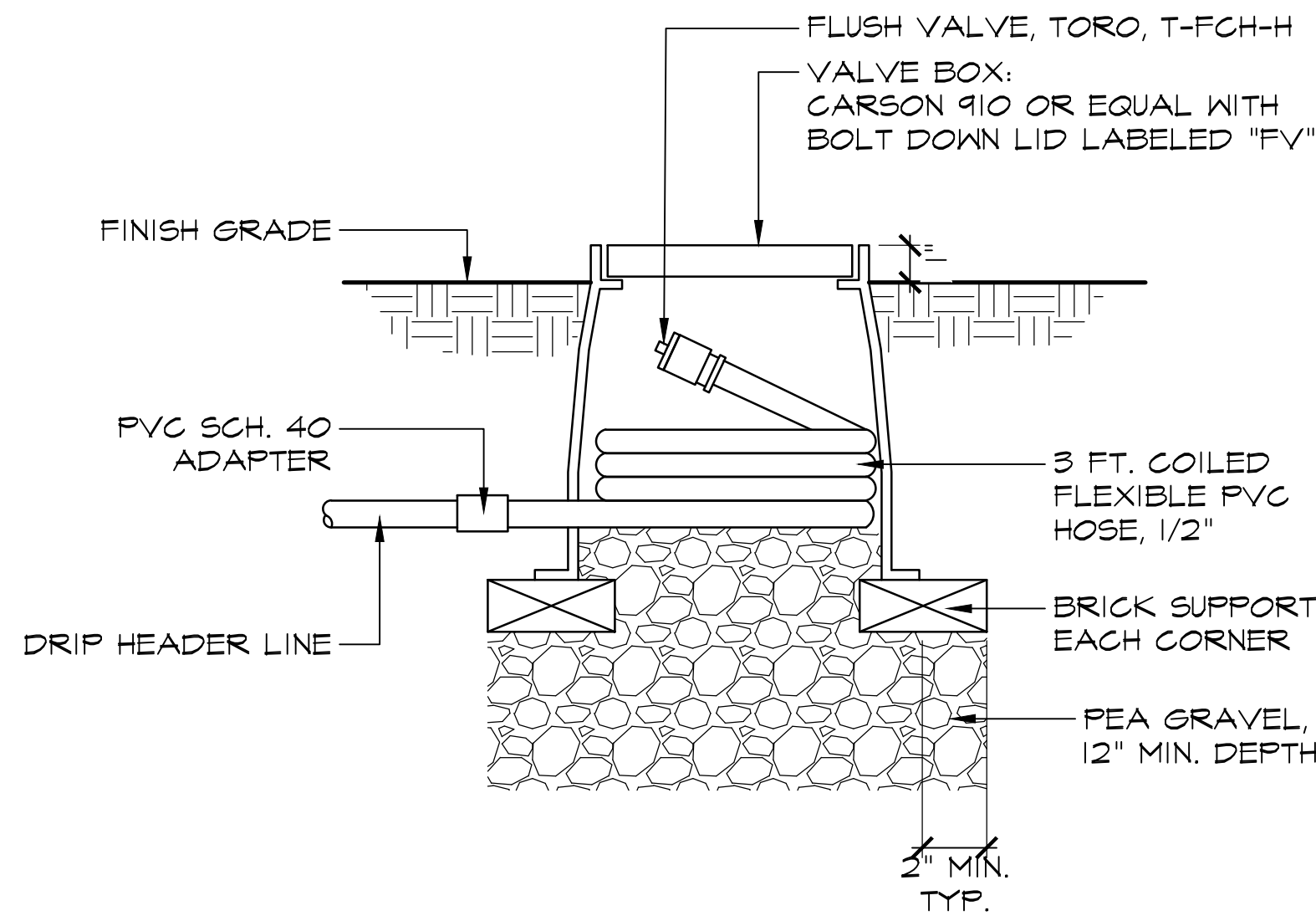
**8** GATE VALVE  
**L6.1** SECTION  
15051 Gate Valve 4.dwg N.T.S.



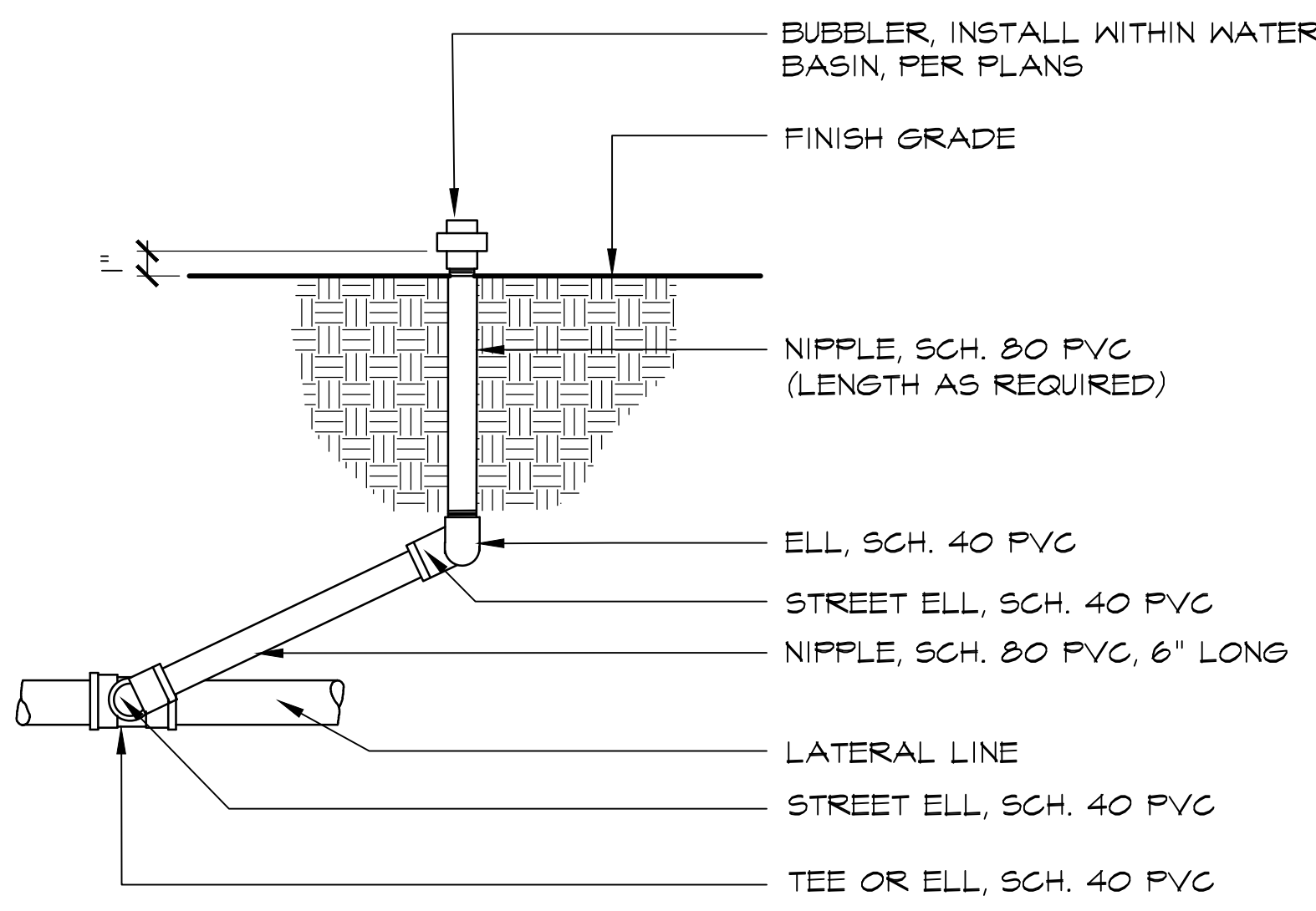
**9** QUICK COUPLING VALVE  
**L6.1** SECTION  
15051 Quick Coupling Valve 4.dwg N.T.S.

**NOTES:**

1. LOCATE FLUSH VALVE AT FURTHEST LOCATION FROM THE POINT OF CONNECTION TO THE DRIP CONTROL VALVE ASSEMBLY.

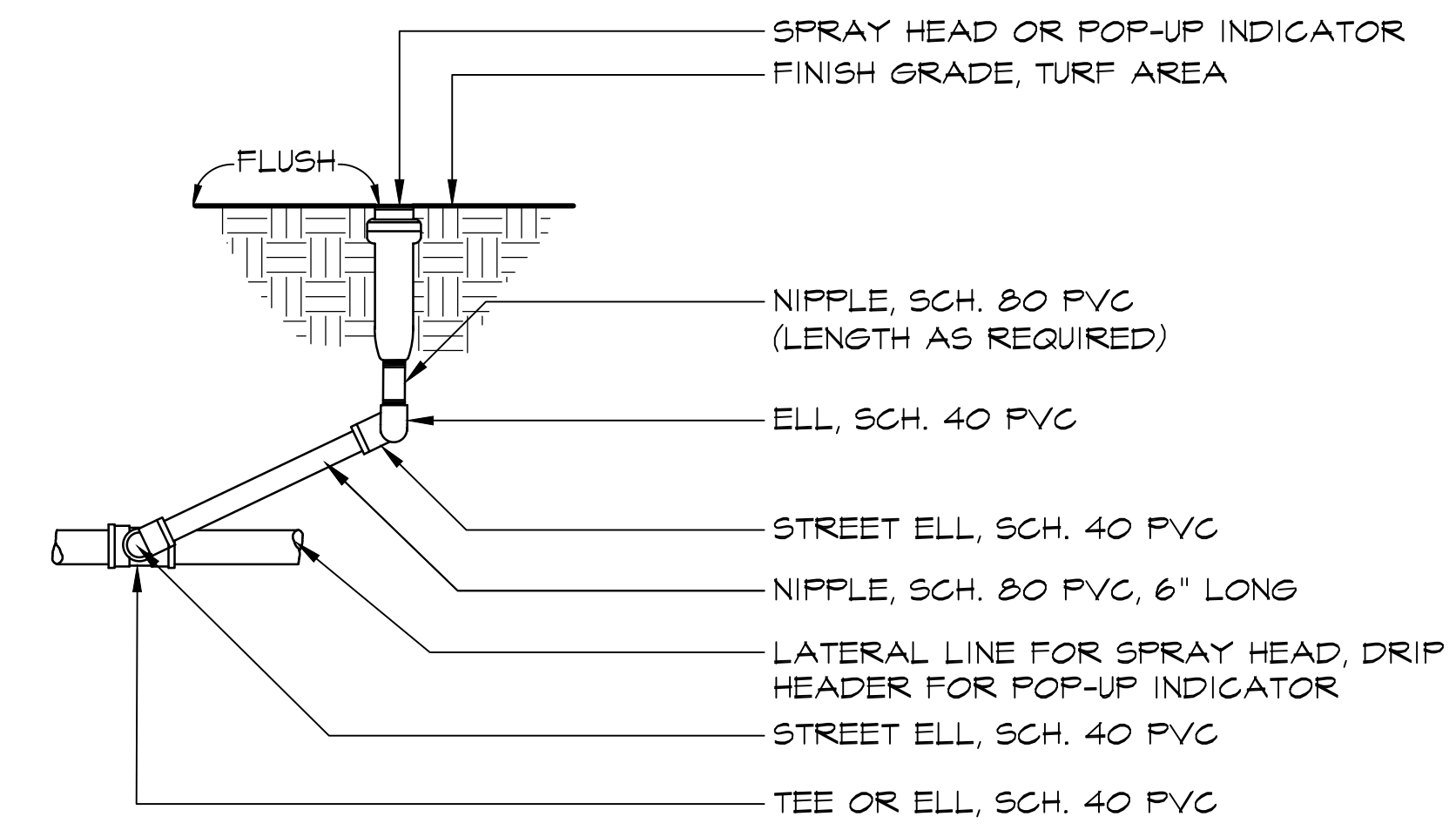


**1 FLUSH VALVE SECTION** N.T.S.  
15051 Drip Flush Valve 8.dwg



NOTE: ASSEMBLE ENTIRE UNIT AS TRIPLE SWING JOINT

**2 BUBBLER SECTION** N.T.S.  
15051 Bubbler 1 8.dwg

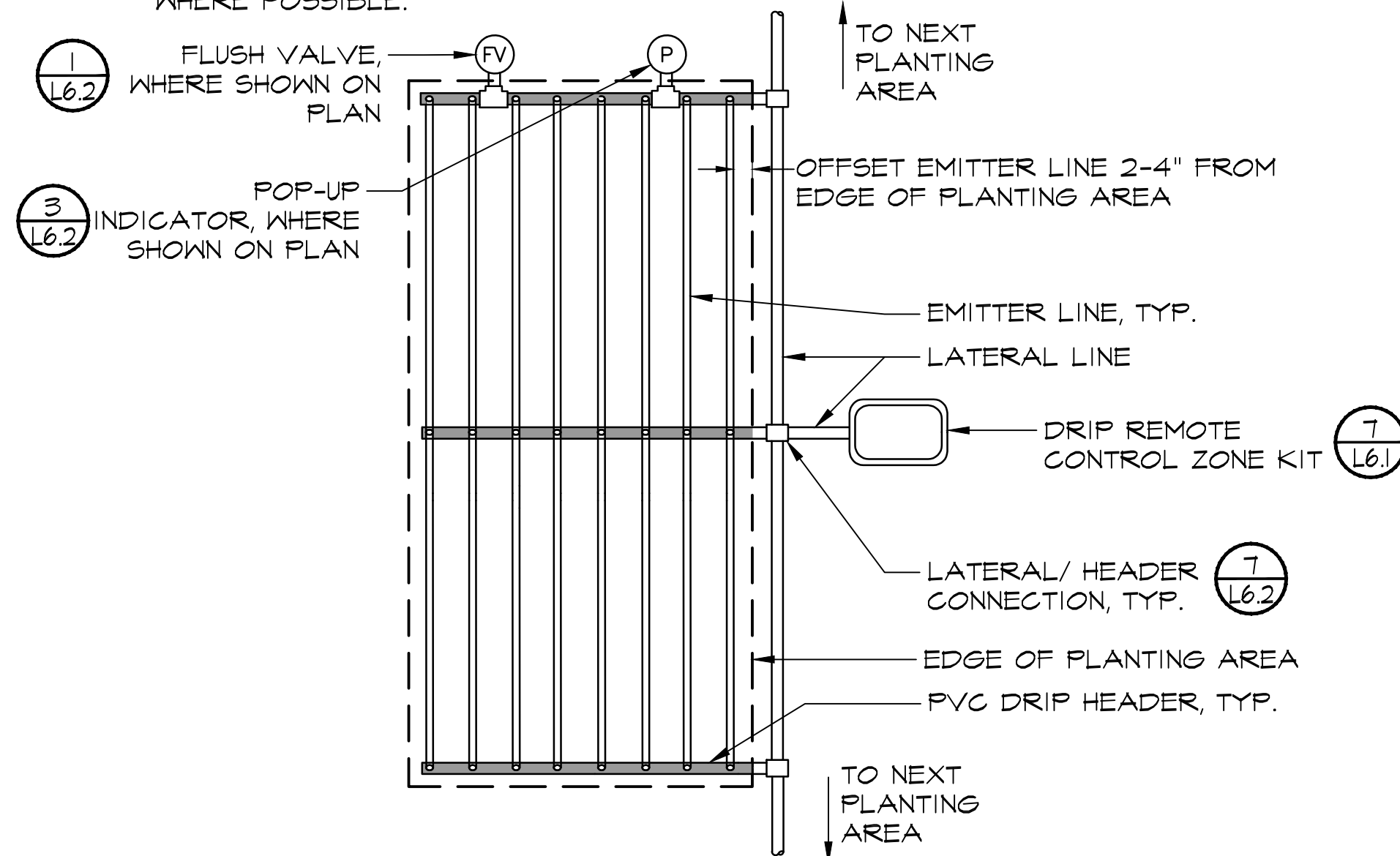


NOTE: ASSEMBLE ENTIRE UNIT AS TRIPLE SWING JOINT, AS AN ALTERNATIVE TO THE ABOVE MATERIALS, "MARLEX" POLYETHYLENE FITTINGS OR A PRE-MANUFACTURED PRODUCT MAY BE SUBSTITUTED.

**3 SPRAY HEAD OR POP-UP INDICATOR SECTION** N.T.S.  
15051 Sprayhead 1 48.dwg

**NOTES:**

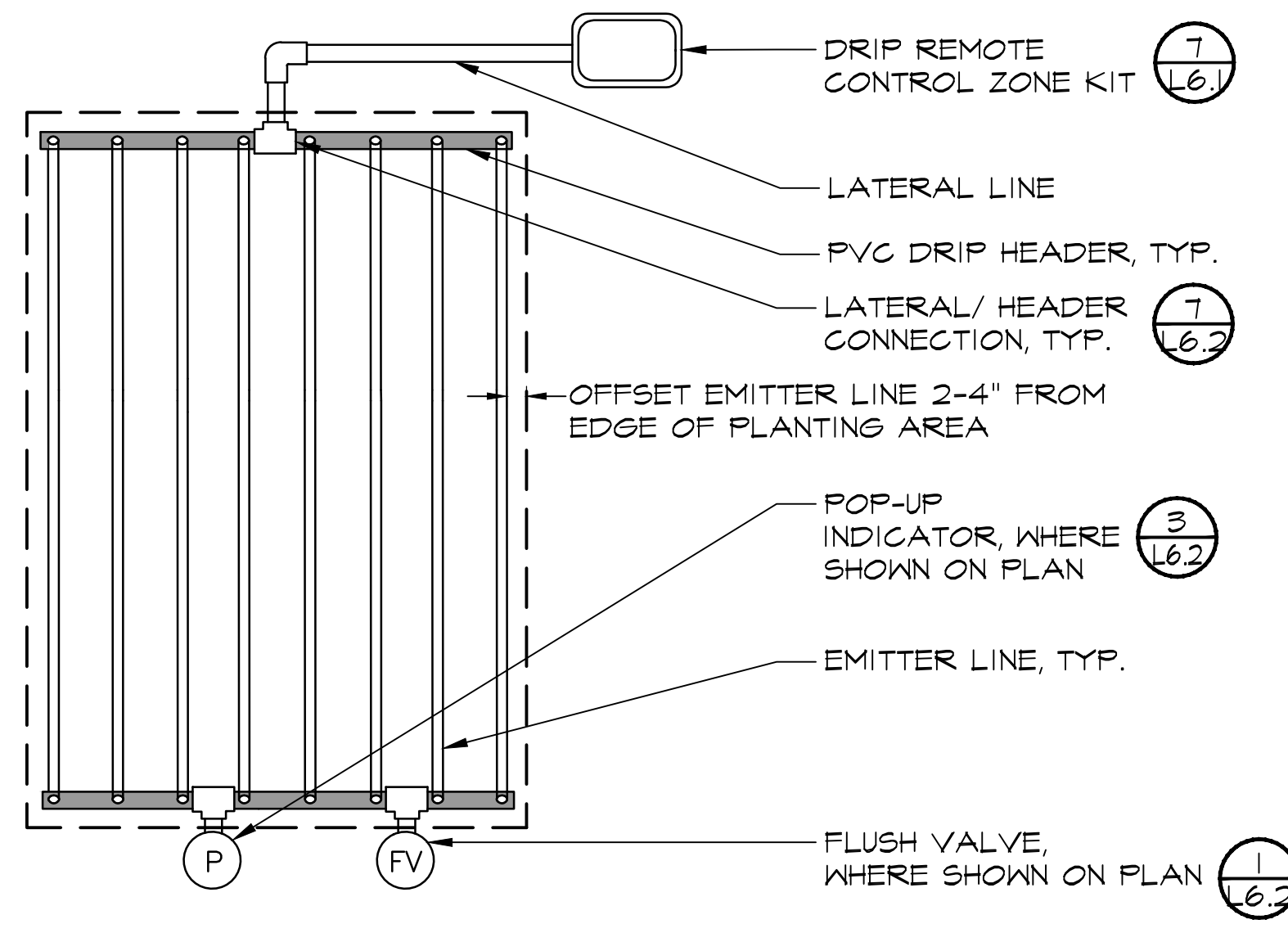
1. STAKE EMITTER LINE EVERY 4 FEET.
2. LATERAL LINE, FLUSH VALVE AND DRIP REMOTE CONTROL ZONE KIT SHOWN OUTSIDE OF PLANTING AREA FOR GRAPHIC PURPOSES ONLY. LOCATE WITHIN PLANTING AREA WHERE POSSIBLE.



**4 DRIP IRRIGATION LAYOUT, CENTER FEED PLAN** N.T.S.  
15051 Drip Center Feed Layout 1.dwg

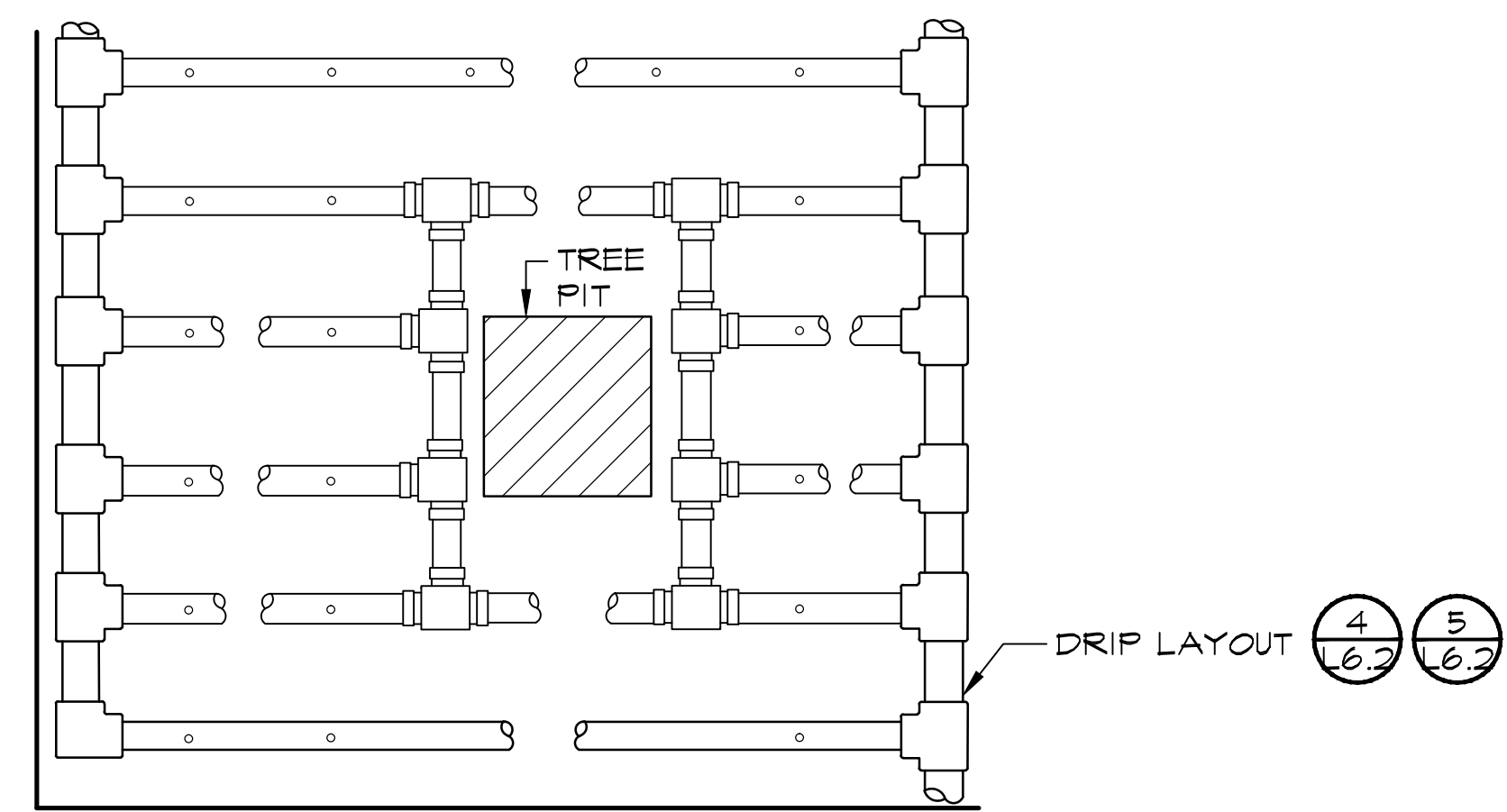
**NOTES:**

1. STAKE EMITTER LINE EVERY 4 FEET.
2. LATERAL LINE, FLUSH VALVE AND DRIP REMOTE CONTROL ZONE KIT SHOWN OUTSIDE OF PLANTING AREA FOR GRAPHIC PURPOSES ONLY. LOCATE WITHIN PLANTING AREA WHERE POSSIBLE.

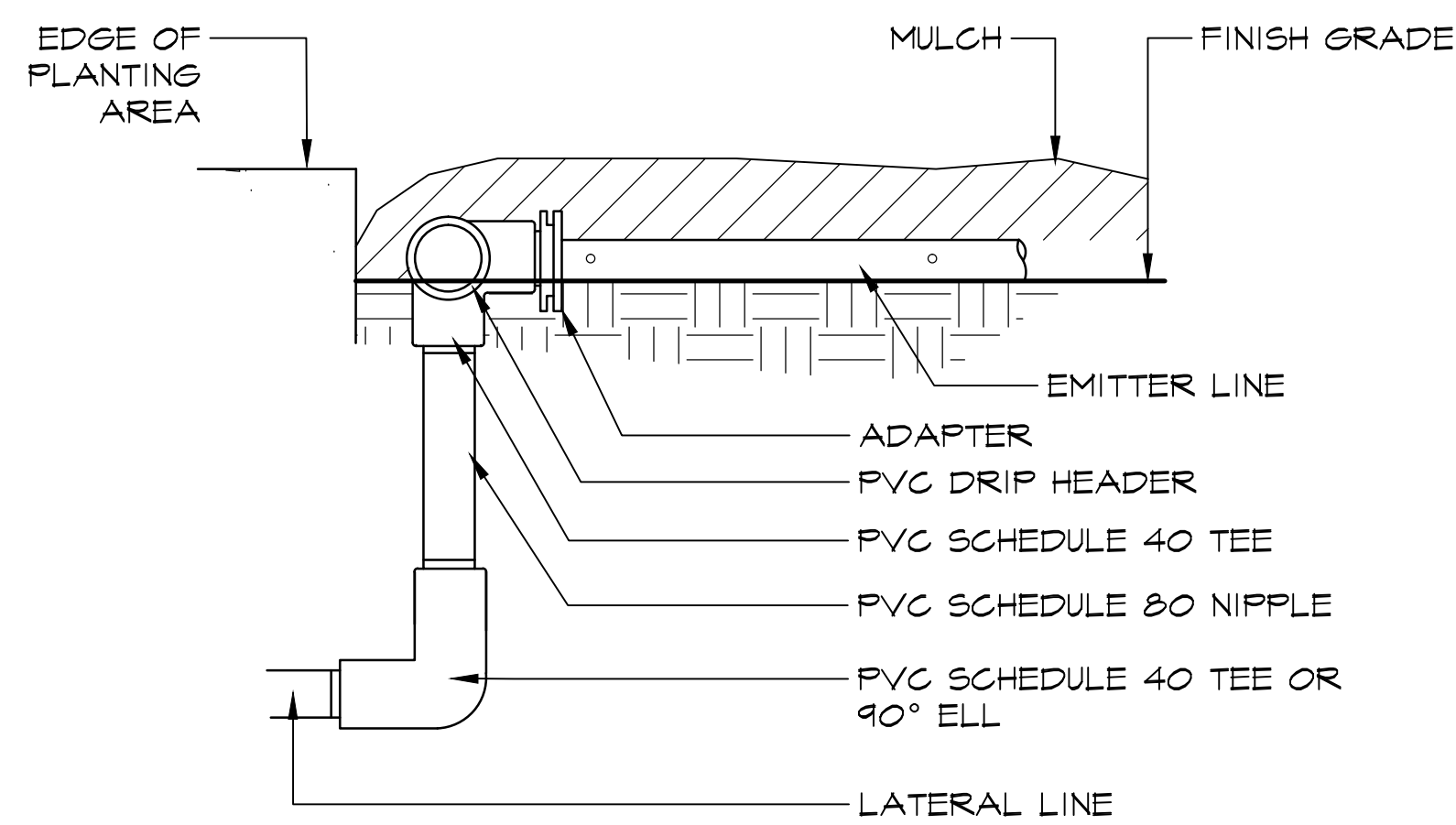


**5 DRIP IRRIGATION LAYOUT, END FEED PLAN** N.T.S.  
15051 Drip End Feed Layout 1.dwg

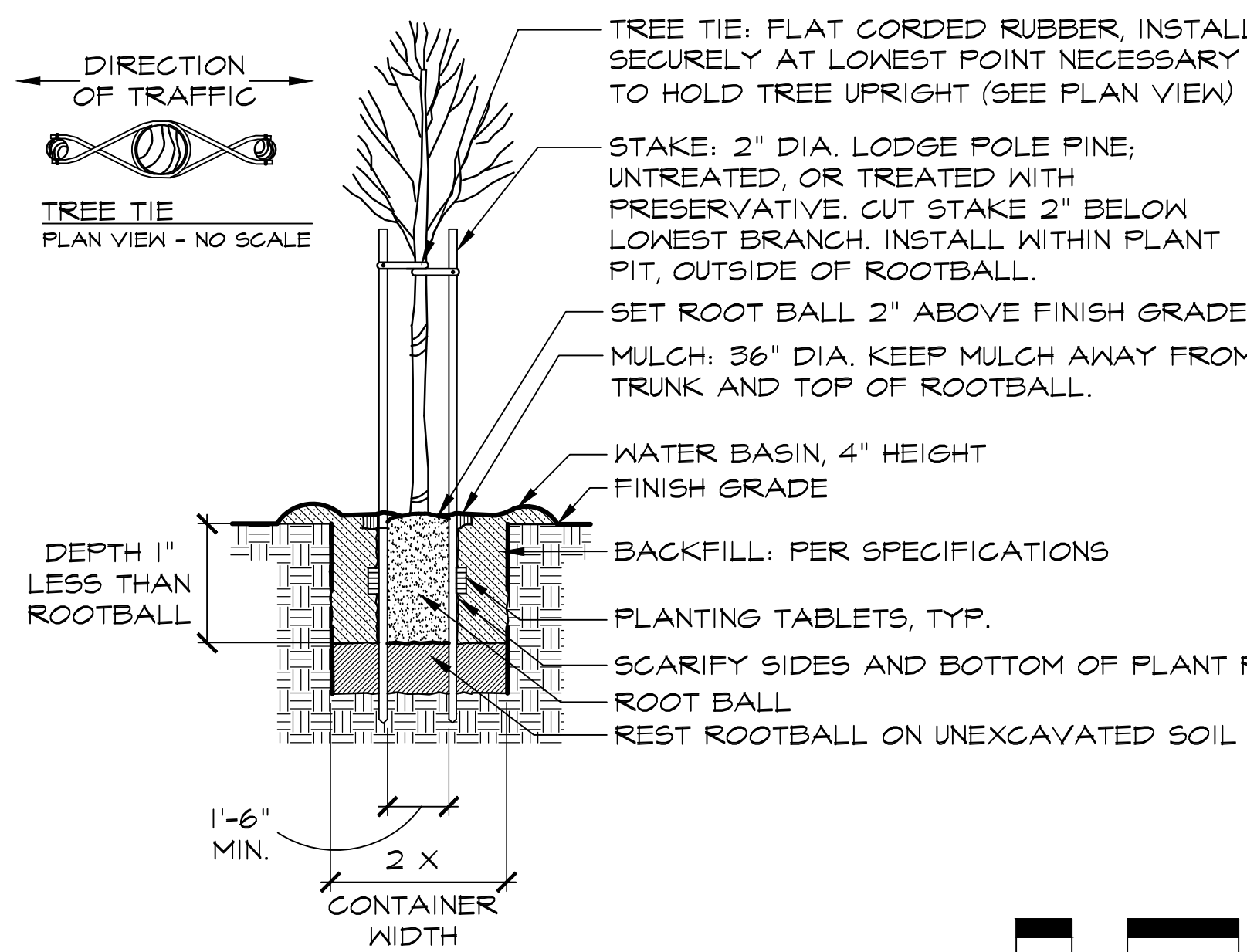
NOTE: PROVIDE OPENING AT EACH TREE LOCATION AS DETAILED WITH 12" CLEARANCE AROUND ALL SIDES OF ROOTBALL OF NEW TREES AND MINIMUM 3' CLEARANCE AROUND TRUNK OF EXISTING TREES.



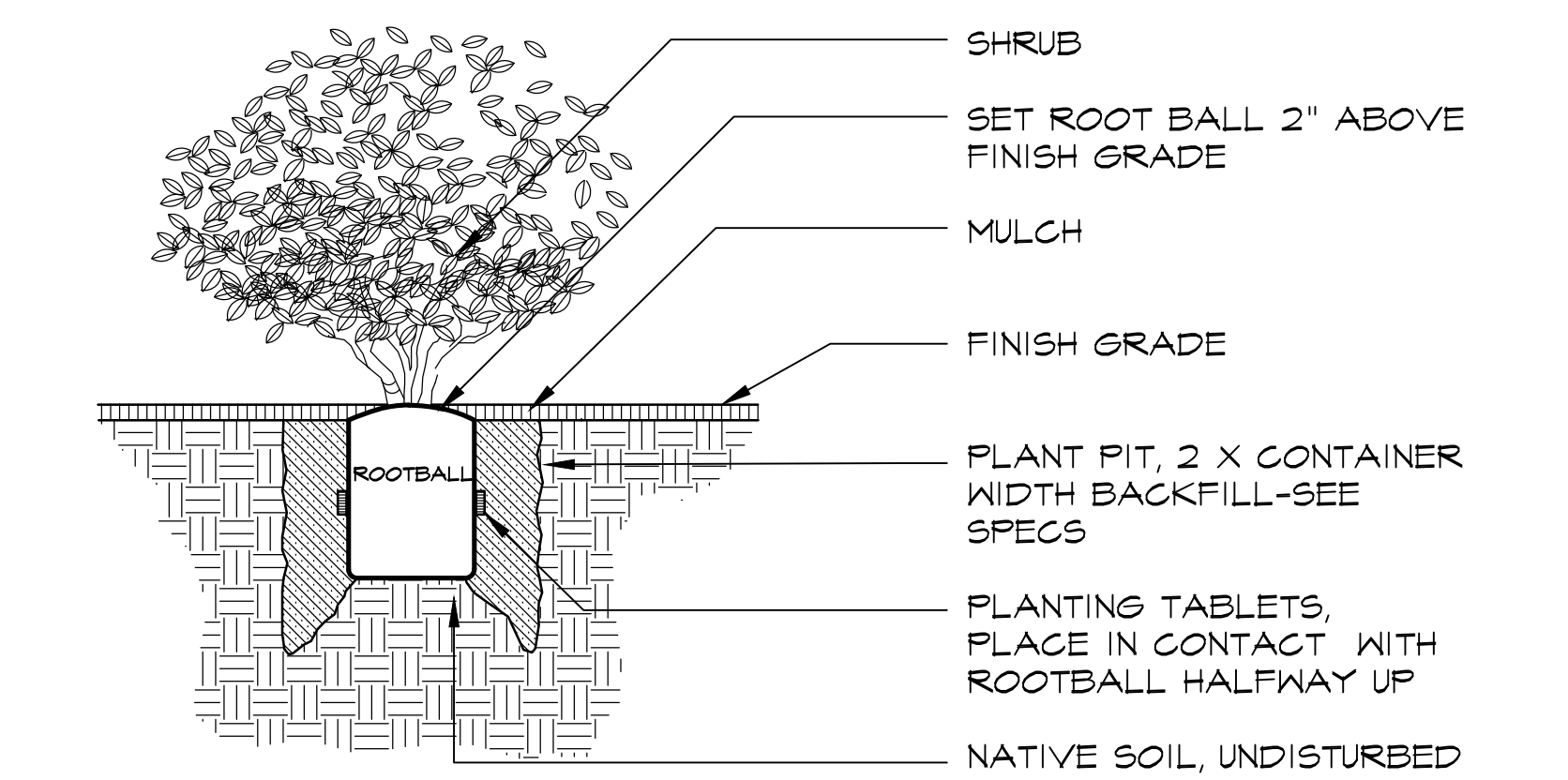
**6 DRIP IRRIGATION LAYOUT AT TREE PLAN** N.T.S.  
15051 Drip Layout at Tree 8.dwg



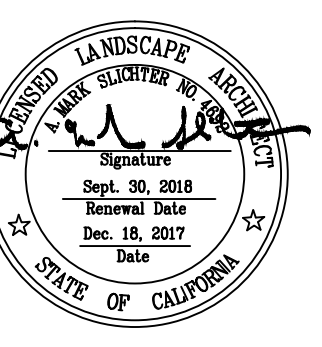
**7 LATER/HEADER CONNECTION SECTION** N.T.S.  
15051 Drip Lateral Header Connection 8.dwg



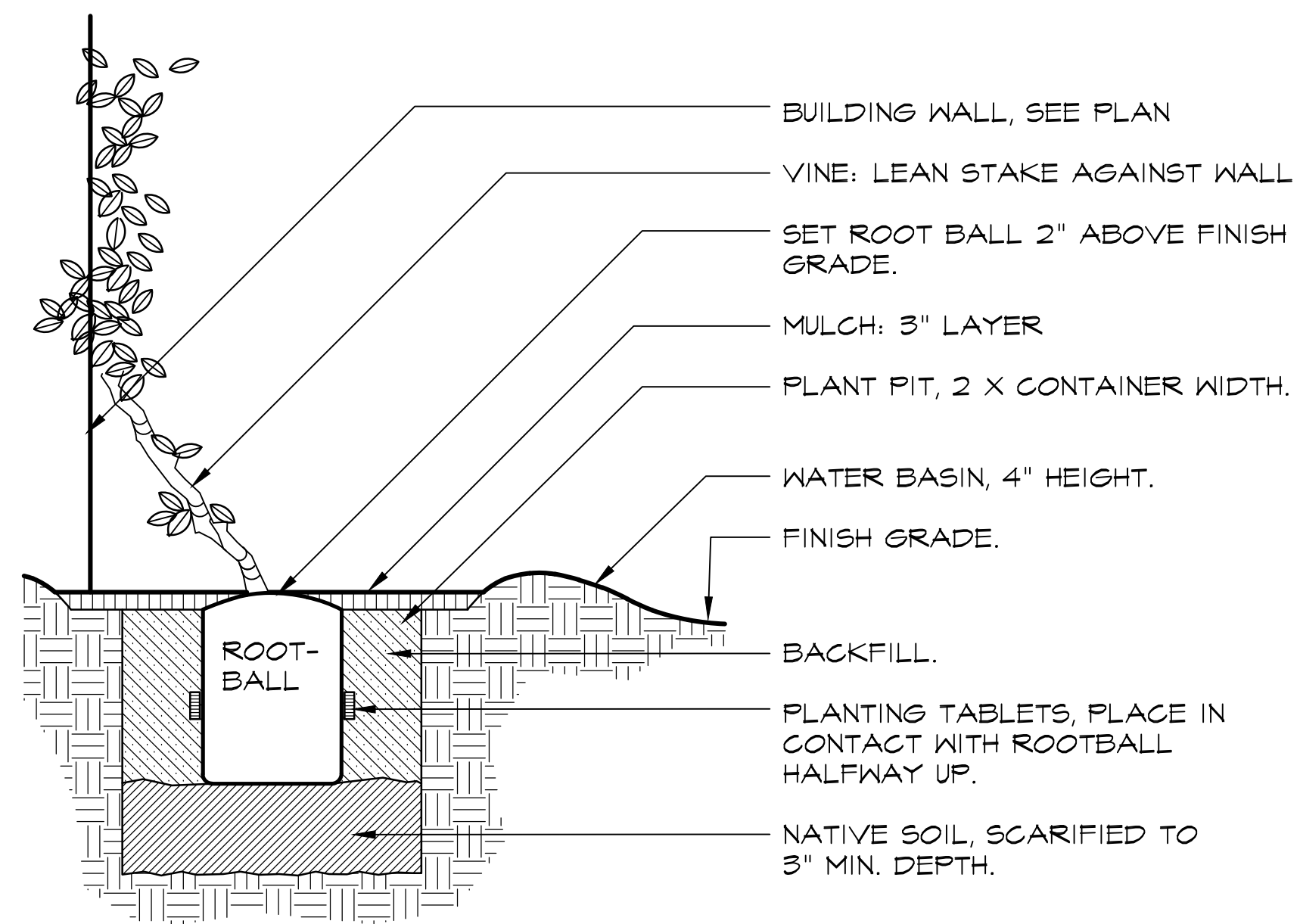
**8 TREE PLANTING SECTION** N.T.S.  
15051 Tree Staking 2 32.dwg



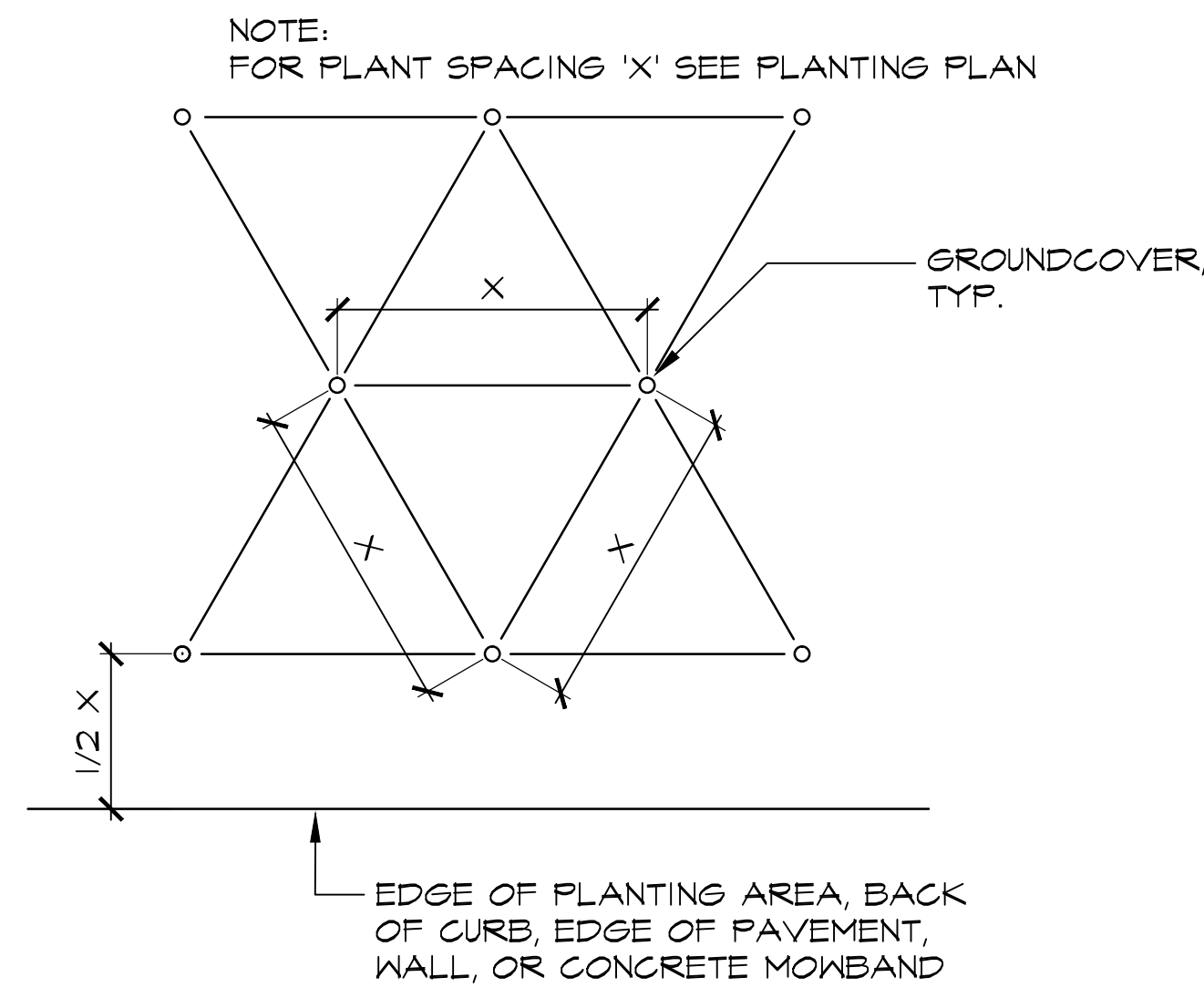
**9 SHRUB PLANTING SECTION** N.T.S.  
15051 Shrub Planting 2 48.dwg







**1** VINE PLANTING SECTION **N.T.S.**  
 L6.3 15051 Vine Planting 16.dwg



**2** GROUNDCOVER SPACING SECTION **N.T.S.**  
 L6.3 15051 Groundcover Spacing 48.dwg

**DTA** Dreiling Terrones Architecture Inc.  
 Architecture  
 Infrastructure  
 Environments  
 1100 Juenteo Avenue  
 San Jose, California  
 95128  
 408.263.1200  
 314 Center Street #220  
 Redwood City, California  
 94063  
 650.764.1305

**42 YEARS**  
 Callender Associates  
 Landscape Architecture  
 1633 BAYSHORE HWY  
 Suite 113  
 San Jose, CA 95131  
 T 408.275.3313  
 F 408.275.3296



**Building J Landscape Plans**  
 Independence High School  
 1776 Educational Park Dr  
 San Jose, CA 95133  
 East Side Union High School District